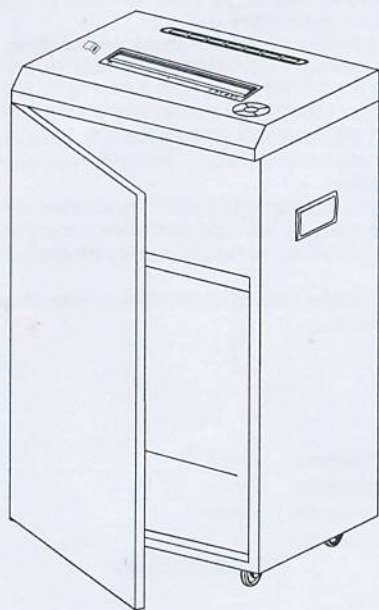


Agent

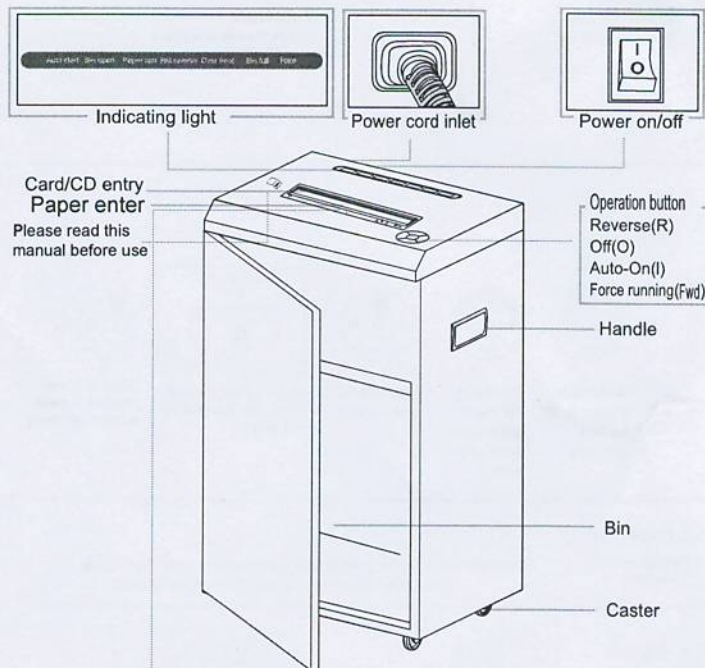


JP-537C

Instruction Book Product Warranty

You will use Paper shredder properly by this manual.
Please reading before using and
following the steps listed on the manual for safety.

Parts and Function



Warning signal

- ⚠ Sheets per pass
- ⚠ Warning
- ⚠ Avoid touching the document feed opening with hands
- ⚠ Avoid hair touching the document feed opening
- ⚠ Product is not intended for use by children (product is not a toy)
- ⚠ Avoid clothing touching the document feed opening
- ⚠ Keep aerosol products away
- ⚠ Not shred paper clips

1. Avoid touching exposed blades under Micro-cut shredder head.
2. The grounded socket-outlet shall be installed near the equipment and shall be easily accessible.

• 1 •

Capabilities

Will shred:

Paper, credit cards, CD/DVDs, staples and paper clips

Will not shred:

Continuous forms, adhesive labels, transparencies, newspaper, cardboard, wet paper, laminates or plastic other than noted above

Paper shred size:

Micro-Cut 1X2 mm

Maximum:

Sheets per pass 6 (70g)

Cards/CDs per pass 1

Entry width 230mm

Duty Cycle >30Min

(⚠ Heavier paper, humidity or other than rated voltage may reduce capacity.)

Recommended daily usage rate 150 times paper/100cards/ 50 CDs

MAINTENANCE

- ⚠ Lubricate when or immediately, if:
- * Capacity decreases.
 - * Motor sounds different, or Shredder stops running.



Set to "O".



Apply oil across entry



Press to "I".



Shred one sheet



Set to "R" for 2-3 seconds.

- ⚠ Only use a non-aerosol vegetable oil in long nozzle container

Force running:



When jamming, please set to "Fwd", the shredder will be forced to shred.

• 2 •

Operation

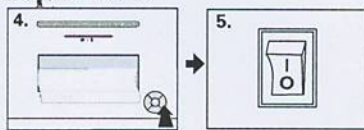
For paper:



Please check the voltage of your shredders carefully before using and then plug in and press the switch.

Set to "I" and the "AUTO START" lights up, the shredders are going to standby.

Machine will shred paper immediately when inserting paper.



If you want to stop shredding the papers, please set to "R". The "HM Reverse" lights up. The machine will reverse automatically and turn back the papers. Set to "I", now the shredder is going to standby again.

Set to "O" and unplug.

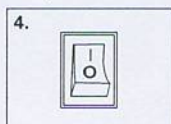
For Credit card/CD:



Please check the voltage of your shredders carefully before using and then plug in and press the switch.

Set to "I" and the shredders are going to standby.

Feed the credit cards/CD into the paper entry and the machine will start automatically.



Set to "O" and unplug.

• 3 •