



G SERIES

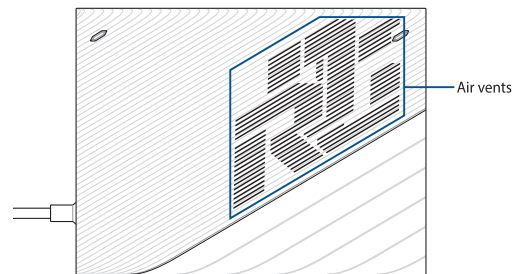
EXTERNAL GRAPHICS EXTENDER

MORE INFO:

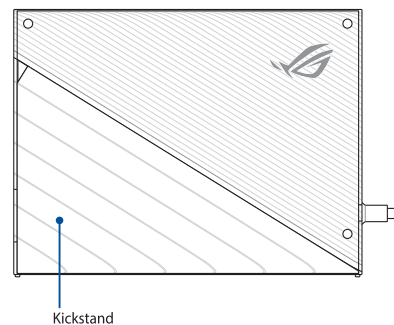


ROG XG Mobile Setup Guide

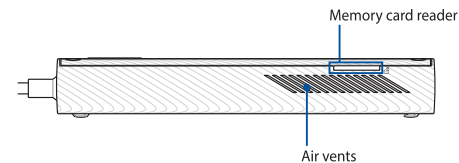
Front View



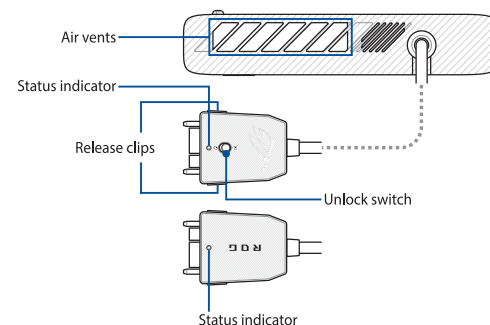
Rear View



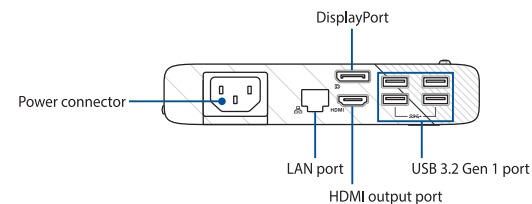
Top View



Left View (with ROG XG Mobile connector)



Right View



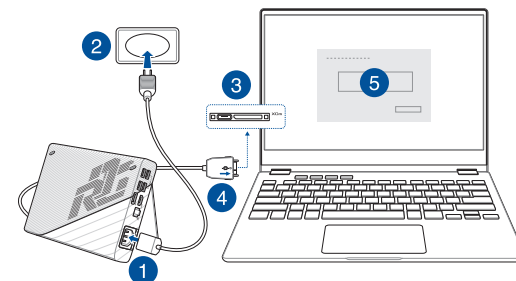
Getting started

IMPORTANT! Follow the instructions and ensure to save all data and stop applications that are using the current GPU before switching the GPUs.

NOTE: For more information on devices supporting the ROG XG Mobile, please visit the ROG official website.

Connect your ROG XG Mobile

1. Plug the bundled AC power cord into the power connector of your ROG XG Mobile.
2. Plug your ROG XG Mobile into a 100V~240V power source.
3. Plug the ROG XG Mobile connector into your Notebook PC's ROG XG Mobile interface and USB Type-C® combo port.
4. Once you see the status indicator on the ROG XG Mobile connector turns white, push the unlock switch to to lock the connector.
5. In the pop-up Settings window, activate the ROG XG Mobile. The status indicator turns red when the activation is complete.



FCC COMPLIANCE INFORMATION

Per FCC Part 2 Section 2.1077

FC

Responsible Party: Asus Computer International
Address: 48720 Kato Rd., Fremont, CA 94538
Phone/Fax No: (510)739-3777/(510)608-4555

hereby declares that the product

Product Name : External Graphics Extender
Model Number : GC32L

compliance statement:

This device complies with part 15 of the FCC Rules. Operation is subject to the following two conditions: (1) This device may not cause harmful interference, and (2) this device must accept any interference received, including interference that may cause undesired operation.

Ver. 180620