

[Skip to content](#)

Manuals+

User Manuals Simplified.






Einhell TC-SY 18-60 Li Cordless Paint Spray System Instruction Manual

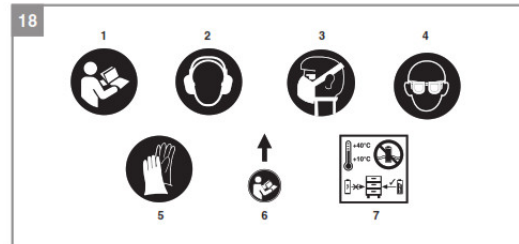
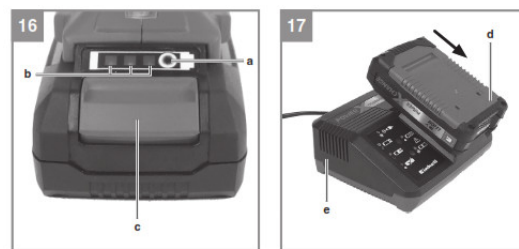
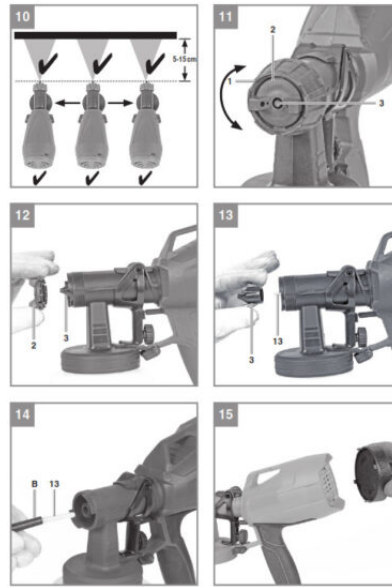
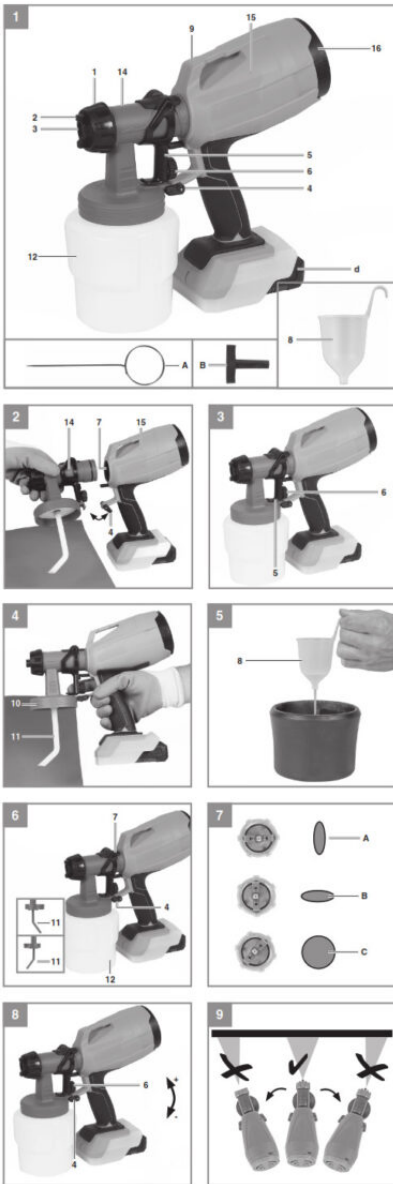
June 2, 2022 June 3, 2022 [Leave a comment on Einhell TC-SY 18-60 Li Cordless Paint Spray System Instruction Manual](#)

[Home](#) » [Einhell](#) » Einhell TC-SY 18-60 Li Cordless Paint Spray System Instruction Manual 

Einhell

TC-SY 18/60 Li
Original operating instructions

Cordless paint spray system 13   



AnI_TC_SY_18_60_Li_SPK13.indb

Danger!

When using the equipment, a few safety precautions must be observed to avoid injuries and damage. Please read the complete operating instructions and safety regulations with due care. Keep this manual in a safe place, so that the information is available at all times. If you give the equipment to any other person, hand over these operating instructions and safety regulations as well. We cannot accept any liability for damage or accidents which arise due to a failure to follow these instructions and the safety instructions.

Explanation of the symbols used (see Fig. 18)

1. Danger! – Read the operating instructions to reduce the risk of injury.
2. Caution! Wear ear-muff s. The impact of noise can cause damage to hearing.
3. Caution! Wear a breathing mask. Dust that is injurious to health can be generated when working on wood and other materials. Never use the device to work on any materials containing asbestos!
4. Caution! Wear safety goggles. Sparks generated during working or splinters, chips and dust emitted by the device can cause loss of sight.
5. Caution! Wear gloves.
6. **Note!** Disassemble and clean the equipment immediately after each use. This is the only way to keep the wetted parts clean and prevent clogging. Parts that are not cleaned can become clogged, causing an equipment fault. 7. Store the batteries only in dry rooms with an ambient temperature of +10°C to +40°C. Place only fully charged batteries in storage (charged at least 40%).

Contents [hide](#)

- [1 Safety regulations](#)
- [2 Layout and items supplied](#)
- [3 Proper use](#)
- [4 Technical data](#)
- [5 Before starting the equipment](#)
- [6 Operation](#)
- [7 Cleaning, maintenance and ordering of spare parts](#)
- [8 Disposal and recycling](#)
- [9 Storage](#)
- [10 Viscosity Table](#)
- [11 Troubleshooting Guide](#)
- [12 Charger indicator](#)
- [13 Warranty certificate](#)
- [14 Documents / Resources](#)
- [14.1 Related Manuals / Resources](#)

Safety regulations

The corresponding safety information can be found in the enclosed booklet. **Danger!** Read all safety regulations and instructions. Any errors made in following the safety regulations and instructions may result in an electric shock, fire and/or serious injury. Keep all safety regulations and instructions in a safe place for future use.

Layout and items supplied

2.1 Layout (Fig. 1-4, 13, 16)

- | | |
|------------------------------|------------------------------|
| 1. Air cap retaining ring | 9. Wall storage hook |
| 2. Air cap | 10. Material tube connection |
| 3. Nozzle | 11. Material tube |
| 4. Locking lever | 12. Container |
| 5. Trigger | 13. Fluid needle (plastic) |
| 6. Max. paint volume control | 14. Trigger unit |
| 7. Pistol mounting | 15. Drive unit |
| 8. Viscosity cup | 16. Filter cap |

- A. Cleaning needle
- B. Adapter for fluid needle
- a. Battery capacity indicator
- b. Battery capacity indicator (LEDs)
- c. Pushlock button
- d. Li-ion battery pack (not included)
- e. Power-X-Charger (not included)

2.2 Items supplied

Please check that the article is complete as specified in the scope of delivery. If parts are missing, please contact our service center or the sales outlet where you made your purchase at the latest within 5 working days after purchasing the product and upon presentation of a valid bill of purchase. Also, refer to the warranty table in the service information at the end of the operating instructions.

- Open the packaging and take out the equipment with care.
- Remove the packaging material and any packaging and/or transportation braces (if available).
- Check to see if all items are supplied.
- Inspect the equipment and accessories for transport damage.
- If possible, please keep the packaging until the end of the guarantee period.

Danger!

The equipment and packaging material are not toys. Do not let children play with plastic bags, foils or small parts. There is a danger of swallowing or suffocating!

- Container
- Cleaning brush (not shown)
- Cleaning needle
- Viscosity cup
- Cap
- 2.5 mm nozzle, mounted on the pistol (colour: black)
- Replacement nozzle, 2 mm (red)
- Original operating instructions
- Safety information

Proper use

The machine is suitable for spraying solvent-borne and water-borne paint, varnish, primers, transparent lacquer, vehicle basecoats and clearcoats, stains and wood preservatives. It must not be used for alkaline solutions, acidic solutions, particle-containing spraying substances, latex paints, and paints containing spray or drip inhibitors. The equipment is to be used only for its prescribed purpose. Any other use is deemed to be a case of misuse. The user/operator and not the manufacturer will be liable for any damage or injuries of any kind caused as a result of this. Please note that our equipment has not been designed for use in commercial, trade or industrial applications. Our warranty will be voided if the machine is used in commercial, trade or industrial businesses or for equivalent purposes.

Technical data

Motor power supply 18 V DC
Max. flow rate 650 ml/min
Container volume 800 ml
Nozzle Ø 2.0 / 2.5 mm
Max. viscosity 60 DIN-sec
Protection class III
Weight without battery approx. 1.2 kg

Danger!

Sound and vibration

Sound and vibration values were measured in accordance with EN 60745.

LpA sound pressure level 67.1 dB(A)
KpA uncertainty 3 dB
LWA sound power level 78.1 dB(A)
KWA uncertainty 3 dB

Wear ear-muffs.

The impact of noise can cause damage to hearing.

Total vibration values (vector sum of three directions) determined in accordance with EN 50580.

Handle

Vibration emission level $a_h = 1.92 \text{ m/s}^2$ Uncertainty $K = 1.5 \text{ m/s}^2$

The specified vibration value was established in accordance with a standardized testing method. It may change according to how the electric equipment is used and may exceed the specified value in exceptional circumstances. The specified vibration value can be used to compare the equipment with other electric power tools. The specified vibration value can be used for the initial assessment of a harmful effect.

Keep the noise emissions and vibrations to a minimum.

- Only use appliances that are in perfect working order.
- Service and clean the appliance regularly.
- Adapt your working style to suit the appliance.
- Do not overload the appliance.
- Has the appliance serviced whenever necessary?
- Switch the appliance off when it is not in use.

- Wear protective gloves.

Caution!

Residual risks Even if you use this electric power tool in accordance with instructions, certain residual risks cannot be ruled out. The following hazards may arise in connection with the equipment's construction and layout:

1. Lung damage if no suitable protective dust mask is used.
2. Damage to hearing if no suitable ear protection is used.
3. Health damage is caused by hand-arm vibrations if the equipment is used over a prolonged period or is not properly guided and maintained.

Before starting the equipment

Warning!

Always remove the battery pack before making adjustments to the equipment.

5.1 Spray gun assembly (Fig. 2/3/4)

- The trigger unit (14) is attached to the drive unit (15) by a bayonet connector on the gun mounting (7).
- Open the locking lever (4).
- Insert the trigger unit (14) into the gun mounting (7) with a twist.
- Close the locking lever.
- Insert the material tube (11) into the material tube connection (10)
- Screw the container into the trigger unit.

5.2 Charging the Li battery pack (Fig. 16-17)

1. Remove the battery pack (d) from the handle by pressing the push-lock button (c) downwards to do so.
2. Check that your mains voltage is the same as that marked on the rating plate. Insert the power plug of the charger (e) into the mains socket outlet.
3. The green LED will then begin to flash.

Push the battery pack onto the battery charger. In section 12 (Charger indicator) you will find a table with an explanation of the LED indicator on the charger.

If the battery pack fails to charge, check for the following:

- voltage at the power socket
- whether there is good contact at the charging contacts of the charging unit
If the battery pack still fails to charge, send
- the charger and charging adapter and the battery pack to our customer service center.

To ensure that items are properly packaged and delivered when you send them to us, please contact our customer service or the point of sale at which the equipment was purchased.

When shipping or disposing of batteries and cordless tools, always ensure that they are packed individually in plastic bags to prevent short circuits and fires.

To ensure that the battery pack provides long service, you should take care to recharge it promptly. You must recharge the battery pack when you notice that the performance of the device drops. Never allow the battery pack to become fully discharged. This will cause it to develop a defect.

5.3 Battery capacity indicator (Fig. 16/Pos. b)

Press the button for the battery capacity indicator (a). The battery capacity indicator (b) shows the charge status of the battery using 3 LEDs.

All 3 LEDs are lit:

The battery is fully charged.

2 or 1 LED(s) are lit:

The battery has an adequate remaining charge.

1 LED flashes:

The battery is empty, recharge the battery. All LEDs blink: The battery temperature is too high. Remove the battery from the equipment, keep it at room temperature for one day.

If the fault reoccurs, this means that the rechargeable battery has undergone exhaustive discharge and is defective. Remove the battery from the equipment. Never use or charge a defective battery.

Operation

Warning! Follow the safety precautions provided by the manufacturer of the material you want to spray. Use suitable face masks, gloves and protective clothing.

6.1 Material preparation

The paint usually has to be thinned before it can be used in the spray gun. Instructions on how to thin the paint for spraying are not always printed on the paint tin. You should use the viscosity table as a guide (viscosity = consistency of the paint).

6.1.1 Measuring the viscosity (Fig. 5)

1. Mix the material thoroughly before measuring.
2. Completely immerse the viscosity cup (8) into the material.
3. Then lift the viscosity cup (8) out of the mixture and use a stopwatch to measure the time it takes for all of the material to flow through the cup. As soon as the continuous flow out of the bottom is interrupted, stop the timer.

Repeat until you have the viscosity you need. This is the „Draining time in seconds“. (See 10. Viscosity Table)

6.1.2 Nozzle diameter

The size of the nozzle and fluid needle to be used depends on the viscosity of the material. Depending on the viscosity, use the 2.0 mm dia. nozzle (colour: red, for lower viscosity) or the 2.5 mm dia. nozzle (colour: black, for higher viscosity). The fluid needle in the gun is suitable for both nozzle diameters.

6.2 Working with the paint spray gun (Fig. 6)

Important! Cover all surfaces which must be protected from the spray, even areas which are further away from the place where you are working. A fine mist from the spray gun can spread to areas in the wider surroundings indoors and outdoors, and the material will be deposited on surfaces there.

- Unscrew the container (12) from the paint spray gun.
- Align the material tube (11) for the object you are working on.
- Spraying on horizontal objects: Rotate the material tube (11) towards the front.
- Spraying on raised objects: Rotate the material tube (11) towards the rear.
- Never continue spraying until the container is completely empty. If the material tube no longer reaches the spray material, the spray flow will be interrupted and the coverage on the surface will be uneven.
- Once you have performed the viscosity measurement as described in 6.1.1, place the container (12) on some paper, pour in the material you have prepared and tightly screw the container (12) back into the paint spray gun.
- The paint spray gun is allowed to be placed only on a clean, even surface. Otherwise, it might tip over.
- After each cleaning (see 7.1) or change of fan pattern (see 6.3), tighten the air cap retaining ring (1) to prevent material from leaking out between the air cap retaining ring and the air cap (2).

6.3 Adjusting the fan pattern (Fig. 7)

You can set the paint spray gun to produce three different fan patterns to suit your needs. Loosen the air cap retaining ring (1) and rotate the air cap (2) to the desired position.

Re-tighten the air cap retaining ring.

Selecting the fan pattern:

A: vertical fan

-> for horizontal surfaces

B: horizontal fan

-> for vertical surfaces

C: Round cone

-> for corners, edges and surfaces that are difficult to access

Risk of injury!

Never press the trigger while you are adjusting the jet.

6.4 Adjusting the material flow (Fig. 8)

You can rotate the max. paint volume control (6) to regulate the material flow.

- direction -> lower material flow

+ direction -> higher material flow

6.5 Spraying techniques

- The results you get depend on how smooth and clean the surface is. The surface must be carefully prepared and free of dust.
- Surfaces, threads, etc. which should not be sprayed must be covered.
- Always set the spray gun down on cardboard or something similar. You can use the cardboard as a target to properly adjust the spray gun.

Important:

Always begin spraying outside of the area to be sprayed and avoid interrupting spraying inside the area to be sprayed.

- Wrong (Fig. 9): If you only rotate the spray gun from side to side, the gun will produce a heavy mist and the coverage will be uneven.
- Right (Fig. 10): Always hold the spray gun at the same distance (about 5-15 cm) from the surface you are working on.
- Move the spray gun uniformly laterally or up and down depending on the fan pattern.
- Uniform motion of the spray gun produces uniform finish quality.
- If material residue remains on the nozzle (3) and the air cap (2), clean both parts with solvent or water.

6.6 Disconnecting and cleaning the gun (Fig. 1-2, 11-15)

Danger!

Always pull out the battery pack before starting any cleaning work.

1. Press the trigger (5), so that the residual material flows back into the container (12).
2. Unscrew the container (12) and empty the residual material back into the material tin.
3. Clean the container (12) and the material tube (11) with a bristle brush.
4. Pour solvent or water into the container. Screw the container back on. Solvents with a flash point above 55°C are not allowed to be used.
5. Reinsert the battery and turn on the paint spray gun. Set the max. paint volume control (6) to the maximum flow setting. Spray the solvent or water into a container or rag, but never into the surroundings.
6. Repeat the procedure above until the clear solvent or water exits from the nozzle (3).
7. Then switch off the paint spray gun and remove the battery.
8. Completely empty the container (12). Always keep the container (12) free of residue and check it for damage.
9. Use a rag soaked in solvent or water to clean the outside of the paint spray gun and the container (12).
10. Unscrew the air cap retaining ring (1) and then remove the air cap (2). Remove the nozzle (3). Push the fluid needle adapter (B) onto the filter needle (13). Twist and pull to remove the filter needle. Clean the air cap retaining ring, the air cap, the nozzle, and the filter needle with a bristle brush and solvent or water.
11. Remove the filter cap (16) to clean the air inlet filter. Remove the filter and clean it by blowing it out with air. Then reinsert the filter and screw the filter cap onto the gun. Do not operate the gun without the filter.
12. Reinsert the filter needle. Pull the trigger and insert the nozzle on the filter needle. While inserting, ensure that the pins on the sides of the filter needle point up/down and not right/left. Pull the trigger while placing the air cap on the nozzle and fastening the air cap with the air cap retaining ring.
13. Ensure that the paint spray gun is completely dry before storing it.
14. Properly dispose of residual paint and cleaning agents in accordance with local laws and regulations. Residual paint and solvents must be taken to a suitable collection point. If you are not sure, ask the local council where the nearest collection point is.

Warning!

Never immerse the paint spray gun in water or other liquids. Clean the housing only with a dampened rag.

Note: If you use 2-component paint, you must clean the gun immediately. Otherwise, the paint might dry inside the gun, causing an equipment fault.

Cleaning, maintenance and ordering of spare parts

Danger! Always pull out the mains power plug before starting any cleaning work.

7.1 Cleaning

- Keep all safety devices, air vents and the motor housing free of dirt and dust as far as possible. Wipe the equipment with a clean cloth or blow it with compressed air at low pressure.
- We recommend that you clean the device immediately each time you have finished using it.
- Clean the equipment regularly with a moist cloth and some soft soap. Do not use cleaning agents or solvents; these could attack the plastic parts of the equipment. Ensure that no water can seep into the device. The ingress of water into an electric tool increases the risk of an electric shock.

7.2 Maintenance

There are no parts inside the equipment which require additional maintenance.

7.3 Ordering spare parts and accessories

Please provide the following information when ordering spare parts:

- Type of unit
- Article number of the unit
- ID number of the unit
- Spare part number of the required spare part For our latest prices and information please go to www.Einhell-Service.com

Disposal and recycling

The equipment is supplied in packaging to prevent it from being damaged in transit. The raw materials in this packaging can be reused or recycled. The equipment and its accessories are made of various types of material, such as metal and plastic. Never place defective equipment in your household refuse. The equipment should be taken to a suitable collection center for proper disposal. If you do not know the whereabouts of such a collection point, you should ask in your local council offices.

Storage

Store the equipment and accessories in a dark and dry place at above freezing temperature. The ideal storage temperature is between 5 and 30 °C. Store the electric tool in its

original packaging.

Viscosity Table

Examples of spray materials. Follow the manufacturer's instructions!

	Draining time in seconds (DIN-sec)
Solvent-borne primers	25-30
Solvent-borne paint	15-30
Water-borne primers	25-30
Water-borne paint	20-25
Wood preservatives, stains, oils	undiluted
Disinfectants	undiluted
Vehicle topcoats	20-25

Troubleshooting Guide

Fault	Possible cause	Remedy
No material exits from the nozzle	<ul style="list-style-type: none">- Nozzle clogged.- Material tube clogged.- Max. paint volume control rotated too far anti-clockwise (-).- Material tube is loose.- No pressure build-up in the container.- Consistency of the material is too thick.	<ul style="list-style-type: none">- Clean- Clean- Turn clockwise (+)- Insert- Tighten container- Dilute
Material drips from nozzle after spraying	<ul style="list-style-type: none">- Nozzle is loose.- Nozzle is worn.- Nozzle seal is worn.- Solids in the air cap or nozzle.	<ul style="list-style-type: none">- Tighten- Replace – Replace – Clean
Atomization too coarse	<ul style="list-style-type: none">- Material viscosity too high.- Material volume too high.- Max. paint volume control turned too far clockwise (+). – Dirty nozzle.- Insufficient pressure build-up in the container	<ul style="list-style-type: none">- Dilute- Turn the max. paint volume control anticlockwise (-)- Clean- Tighten the container
Intermittent ("fluttering") spray	<ul style="list-style-type: none">- Almost all of the material in the container has been used up.	<ul style="list-style-type: none">- Add more
Coating pattern is too light and uneven	<ul style="list-style-type: none">- You moved the paint spray gun too fast across the surface you are working on.	<ul style="list-style-type: none">- Move the gun more slowly
The paint runs	<ul style="list-style-type: none">- You applied too much material	<ul style="list-style-type: none">- Turn the max. paint volume control anticlockwise (-)
Excessive spray mist	<ul style="list-style-type: none">- The gun is too far away from the object you are working on	<ul style="list-style-type: none">- Hold the gun closer- Turn the max. paint volume control anticlockwise (-)

Charger indicator

Indicator status

		Explanations and actions
Red LED	Green LED	
Off	Flashing	Ready for use The charger is connected to the mains and is ready for use; there is no battery pack in the charger
On	Off	Charging The charger is charging the battery pack in quick charge mode. The charging times are shown directly on the charger. Important! The actual charging times may vary slightly from the stated charging times depending on the existing battery charge.
Off	On	The battery is charged and ready for use. The unit then changes over to gentle charging mode until the battery is fully charged. To do this, leave the rechargeable battery on the charger for approx. 15 minutes longer. Action: Take the battery pack out of the charger. Disconnect the charger from the mains supply.
Flashing	Off	Adapted charging The charger is in gentle charging mode. For safety reasons the charging is performed less quickly and takes more time. The reasons can be: – The rechargeable battery has not been used for a very long time. – The battery temperature is outside the ideal range. Action: Wait for the charging to be completed; you can still continue to charge the battery pack.
Flashing	Flashing	Fault Charging is no longer possible. The battery pack is defective. Action: Never charge a defective battery pack. Take the battery pack out of the charger.
On	On	Temperature fault The battery pack is too hot (e.g. due to direct sunshine) or too cold (below 0° C). Action: Remove the battery pack and keep it at room temperature (approx. 20° C) for one day .



For EU countries only

Never place any electric power tools in your household refuse.

To comply with European Directive 2012/19/EC concerning old electric and electronic equipment and its implementation in national laws, old electric power tools have to be separated from other waste and disposed of in an environment-friendly fashion, e.g. by taking to a recycling depot. Recycling alternative to the return request:

As an alternative to returning the equipment to the manufacturer, the owner of the electrical equipment must make sure that the equipment is properly disposed of if he no longer wants to keep the equipment. The old equipment can be returned to a suitable collection point that will dispose of the equipment in accordance with the national recycling and waste disposal regulations. This does not apply to any accessories or aids without electrical components supplied with the old equipment. The reprinting or reproduction by any other means, in whole or in part, of documentation and papers accompanying products, is permitted only with the express consent of the Einhell Germany AG. Subject to technical changes

Service information

We have competent service partners in all countries named on the guarantee certificate whose contact details can also be found on the guarantee certificate. These partners will help you with all service requests such as repairs, spare and wearing part orders or the purchase of consumables.

Please note that the following parts of this product are subject to normal or natural wear and that the following parts are therefore also required for use as consumables.

Category	Example
Wear parts*	Battery
Consumables*	Nozzle
Missing parts	

* Not necessarily included in the scope of delivery!

In the effect of defects or faults, please register the problem on the internet at www.Einhell-Service.com.

Please ensure that you provide a precise description of the problem and answer the following questions in all cases:

- Did the equipment work at all or was it defective from the beginning?
- Did you notice anything (symptom or defect) prior to the failure?
- What malfunction does the equipment have in your opinion (main symptom)?
Describe this malfunction.

Warranty certificate

Dear Customer,

All of our products undergo strict quality checks to ensure that they reach you in perfect condition. In the unlikely event that your device develops a fault, please contact our service department at the address shown on this guarantee card. You can also contact us by telephone using the service number shown. Please note the following terms under which guarantee claims can be made:

1. These guarantee terms apply to consumers only, i.e. natural persons intending to use this product neither for their commercial activities nor for any other self-employed activities. These warranty terms regulate additional warranty services, which the manufacturer mentioned below promises to buyers of its new products in addition to their statutory rights of guarantee. Your statutory guarantee claims are not affected by this guarantee. Our guarantee is free of charge to you.
2. The warranty services cover only defects due to material or manufacturing faults on a product which you have bought from the manufacturer mentioned below and are limited to either the rectification of said defects on the product or the replacement of the product, whichever we prefer. Please note that our devices are not designed for use in commercial, trade or professional applications. A guarantee contract will not be created if the device has been used by commercial, trade or industrial business or has been exposed to similar stresses during the guarantee period.
3. The following are not covered by our guarantee: – Damage to the device caused by a failure to follow the assembly instructions or due to incorrect installation, a failure to follow the operating instructions (for example connecting it to an incorrect mains voltage or current type) or a failure to follow the maintenance and safety instructions or by exposing the device to abnormal environmental conditions or by lack of care and maintenance. – Damage to the device caused by abuse or incorrect use (for example overloading the device or the use of unapproved tools or accessories), ingress of foreign bodies into the device (such as sand, stones or dust, transport damage), the use of force or damage caused by external forces (for example by dropping it). – Damage to the device or parts of the device caused by normal or natural wear or tear or by normal use of the device.
4. The guarantee is valid for a period of 24 months starting from the purchase date of the device. Guarantee claims should be submitted before the end of the guarantee period within two weeks of the defect being noticed. No guarantee claims will be accepted after the end of the guarantee period. The original guarantee period remains applicable to the device even if repairs are carried out or parts are replaced. In such cases, the work performed or parts fitted will not result in an extension of the

guarantee period, and no new guarantee will become active for the work performed or parts fitted. This also applies if on-site service is used.

5. To make a claim under the guarantee, please register the defective device at: www.Einhell-Service.com. Please keep your bill of purchase or other proof of purchase for the new device. Devices that are returned without proof of purchase or without a rating plate shall not be covered by the guarantee, because appropriate identification will not be possible. If the defect is covered by our guarantee, then the item in question will either be repaired immediately and returned to you or we will send you a new replacement.

Of course, we are also happy offer a chargeable repair service for any defects which are not covered by the scope of this guarantee or for units that are no longer covered. To take advantage of this service, please send the device to our service address. Also refer to the restrictions of this warranty concerning wear parts, consumables and missing parts as set out in the service information in these operating instructions.



Declaration of conformity: We declare conformity in accordance with the EU directive and standards for article
Akku-Farbsprühsystem TC-SY 18/60 Li (Einhell)

2014/29/EU
2005/32/EC_2009/125/EC
(EU)2015/1188
x 2014/35/EU
2006/28/EC
X 2014/30/EU
2014/32/EU
2014/53/EU
2014/68/EU
(EU)2016/426
Notified Body:
(EU)2016/425
X 2011/65/EU_(EU)2015/863

2006/42/EC
Annex IV
Notified Body:
Reg. No.:
2000/14/EC_2005/88/EC
Annex V
Annex VI
Noise:
measured LWA
= dB (A); guaranteed LWA
= dB (A)
P = kW; L/Ø = cm
Notified Body:
2012/46/EU_(EU)2016/1628
Emission No.:

Standard references: EN 62841-1; EN 50580;
EN 55014-1; EN 55014-2; EN 61000-3-2; EN 61000-3-3
Einhell Germany AG ·
Landau/Isar, den 14.10.2020



Andreas Weichselgartner/General-Manager



Jeff Dong/Product-Management

First CE: 2020
Art.-No.: 42.600.25
I.-No.: 21010
Subject to change without notice
Archive-File/Record: NAPR017864
Documents registrar: Siegfried Roider

Documents / Resources



[Einhell TC-SY 18-60 Li Cordless Paint Spray System](#) [pdf] Instruction Manual
TC-SY 18-60 Li, Cordless Paint Spray System, Paint Spray System, Spray System

Related Manuals / Resources



[ENDURA PAINT UltraFlex LV Paint User Guide](#)

ENDURA PAINT UltraFlex LV Paint installation STEP 1 STEP 2 STEP 3 STEP 4 STEP 5 STEP 6...



[Einhell TE-CN 18 Li-Solo Cordless Nailer Instructions](#)

Einhell TE-CN 18 Li-Solo Cordless Nailer The TE-CN 18 Li - Solo cordless nailer is a member of...



[Einhell TC-VC 1815 Dry Vacuum Cleaner Instructions](#)

Einhell TC-VC 1815 Dry Vacuum Cleaner Wet/Dry Vacuum Cleaner (elect) TC-VC 1815 Item No.: 2340290 Ident No.: 21030...



[greenwork pro CS60L03 18-Inch 60-Volt Electric Cordless Chainsaw Owner's Manual](#)

greenwork pro CS60L03 18-Inch 60-Volt Electric Cordless Chainsaw Owner's Manual www.greenworkstools.com
16 Exploded View www.greenworkstools.com 15...

Leave a comment

Your email address will not be published.

Comment

Name

Email

Website

Save my name, email, and website in this browser for the next time I comment.

[Manuals+](#)

- [home](#)
- [privacy](#)