

[Skip to content](#)

Manuals+

User Manuals Simplified.



ASUS ROG CETRA True Wireless Earbuds User Guide

April 9, 2022 April 11, 2022 [Leave a comment on ASUS ROG CETRA True Wireless Earbuds User Guide](#)

[Home](#) » [Asus](#) » ASUS ROG CETRA True Wireless Earbuds User Guide 📄



ROG CETRA True Wireless Earbuds User Guide

Contents [hide](#)

- [1 Package contents](#)
- [2 Product Features](#)
- [3 Getting Started](#)
- [4 Battery Indication \(charging\)](#)
- [5 Battery Indication \(not charging\)](#)
- [6 Gestures](#)
- [7 Safety Guidelines](#)
- [8 ANC mode](#)
- [9 Limitation of Liability](#)
- [10 RF Exposure Warning](#)
- [11 Radio Frequency \(RF\) Exposure Information](#)
- [12 REACH](#)
- [13 Compliance Statement of Innovation, Science and Economic Development Canada \(ISED\)](#)
- [14 ASUS Recycling/Takeback Services](#)
- [15 Proper disposal](#)
- [16 Simplified UKCA Declaration of Conformity](#)
- [17 UKCA RF Output table \(The Radio Equipment Regulations 2017\)](#)
- [18 Simplified EU Declaration of Conformity:](#)
- [19 Service and Support](#)
- [20 Documents / Resources](#)
- [20.1 References](#)
- [20.2 Related Manuals / Resources](#)

Package contents



Product Features



1. Indicator
2. Touch panel
3. Microphone

Getting Started

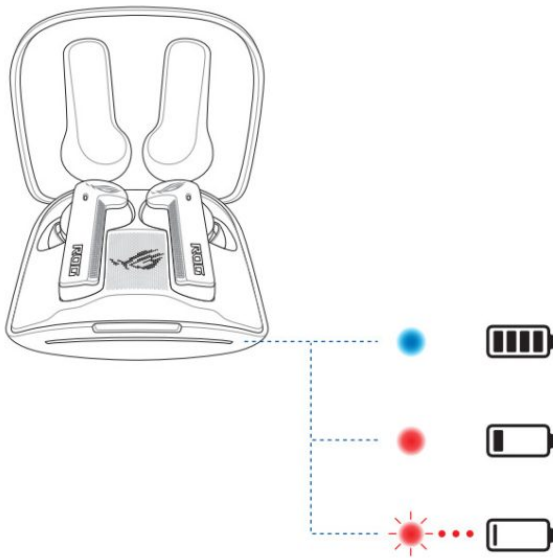


| | | |
|-----------------------------------|---|---|
| Charging the earphones | Play time ANC ON: 4.5 hours ANC OFF: 5 hours | Armoury Crate app Android Android (China) iOS |
|-----------------------------------|---|---|

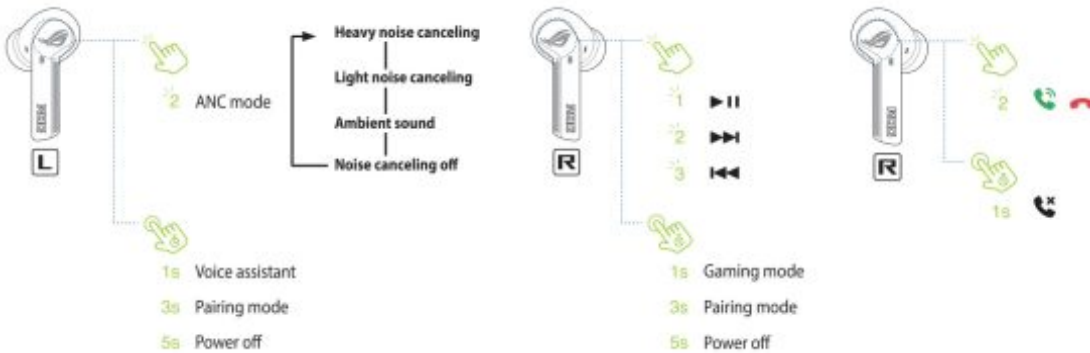
Battery Indication (charging)



Battery Indication (not charging)



Gestures



Safety Guidelines

About the accessories

Accessories that came with this product have been designed and verified for use in connection with this product. Never use accessories for other products to prevent the risk of electric shock or fire.

ANC mode

DO NOT use your headphones or toggle ON ANC mode in situations or environments that require your full attention or require you to be aware of surrounding sounds, such as when driving or on a construction site, failure to do so may pose a danger to yourself or others.

Notices

Federal Communications

Commission Statement This device complies with Part 15 of the FCC Rules. Operation is subject to the following two conditions:

- This device may not cause harmful interference.
- This device must accept any interference received including interference that may cause undesired operation.

This equipment has been tested and found to comply with the limits for a Class B digital device, pursuant to Part 15 of the FCC Rules. These limits are designed to provide reasonable protection against harmful interference in a residential installation. This equipment generates, uses, and can radiate radio frequency energy and, if not installed and used in accordance with the manufacturer's instructions, may cause harmful interference to radio communications. However, there is no guarantee that interference will not occur in a particular installation. If this equipment does cause harmful interference to radio or television reception, which can be determined by turning the equipment off and on, the user is encouraged to try to correct the interference by one or more of the following measures:

- Reorient or relocate the receiving antenna.
- Increase the separation between the equipment and receiver.
- Connect the equipment to an outlet on a circuit different from that to which the receiver is connected.
- Consult the dealer or an experienced radio/TV technician for help.

CAUTION The use of shielded cables for the connection of the monitor to the graphics card is required to assure compliance with FCC regulations. Changes or modifications to this unit not expressly approved by the party responsible for compliance could void the user's authority to operate this equipment.

Limitation of Liability

Circumstances may arise where because of a default on ASUS' part or other liability, you are entitled to recover damages from ASUS. In each such instance, regardless of the basis on which you are entitled to claim damages from ASUS, ASUS is liable for no more than damages for bodily injury (including death) and damage to real property and tangible personal property; or any other actual and direct damages resulted from omission or failure of performing legal duties under this Warranty Statement, up to the listed contract price of each product.

ASUS will only be responsible for or indemnify you for loss, damages, or claims based on contract, tort, or infringement under this Warranty Statement.

This limit also applies to ASUS' suppliers and its reseller. It is the maximum for which ASUS, its suppliers, and your reseller are collectively responsible.

UNDER NO CIRCUMSTANCES IS ASUS LIABLE FOR ANY OF THE FOLLOWING: (1) THIRD-PARTY CLAIMS AGAINST YOU FOR DAMAGES; (2) LOSS OF, OR DAMAGE TO, YOUR RECORDS OR DATA; OR (3) SPECIAL, INCIDENTAL, OR INDIRECT DAMAGES OR FOR ANY ECONOMIC CONSEQUENTIAL DAMAGES (INCLUDING LOST PROFITS

OR SAVINGS), EVEN IF ASUS, ITS SUPPLIERS OR YOUR RESELLER IS INFORMED OF THEIR POSSIBILITY.

RF Exposure Warning

The equipment complies with FCC RF exposure limits set forth for an uncontrolled environment. The equipment must not be co-located or operating in conjunction with any other antenna or transmitter.

Radio Frequency (RF) Exposure Information

The radiated output power of the Wireless Device is below the Innovation, Science, and Economic Development Canada (ISED) radio frequency exposure limits. The Wireless Device should be used in such a manner that the potential for human contact during normal operation is minimized. This device has also been evaluated and shown compliant with the ISED RF Exposure limits under portable exposure conditions. (antennas are less than 20 cm of a person's body).

REACH

Complying with the REACH (Registration, Evaluation, Authorisation, and Restriction of Chemicals) regulatory framework, we published the chemical substances in our products on the ASUS REACH website at <http://csrasus.com/english/REACH.htm>.

Compliance Statement of Innovation, Science and Economic Development Canada (ISED)

This device complies with Innovation, Science, and Economic Development Canada license-exempt RSS standard(s). Operation is subject to the following two conditions: 0) this device may not cause interference, and (2) this device must accept any interference, including interference that may cause undesired operation of the device.
CAN ICES-003(B)/NMB-003(B)

ASUS Recycling/Takeback Services

ASUS recycling and takeback programs come from our commitment to the highest standards for protecting our environment. We believe in providing solutions for you to be able to responsibly recycle our products, batteries, other components as well as packaging materials. Please go to <http://cstasus.com/english/Takeback.htm> for detailed recycling information in different regions.

Proper disposal



DO NOT throw the device in municipal waste. This product has been designed to enable proper reuse of parts and recycling. The symbol of the crossed-out wheeled bin indicates that the product (electrical, electronic equipment, and mercury-containing button cell battery) should not be placed in municipal waste. Check local regulations for disposal of electronic products.



DO NOT throw the device on fire. DO NOT short circuit the contacts. DO NOT disassemble the device.

Simplified UKCA Declaration of Conformity

ASUSTek Computer Inc. hereby declares that this device is in compliance with the essential requirements and other relevant provisions of The Radio Equipment Regulations 2017 (5.1. 2017/1206). The full text of the UKCA declaration of conformity is available at <https://www.asus.com/su000rt/>.

UKCA RF Output table (The Radio Equipment Regulations 2017)

| Function | Frequency | Maximum Output Power (EIRP) |
|------------------|---------------|-----------------------------|
| Bluetooth | 2402-2480 MHz | 8.83 dBm |
| Function | Frequency | H-field strength limit |
| Wireless Charger | 100-200 kHz | -15.277 dBuA |

Simplified EU Declaration of Conformity:

English ASUSTeK Computer Inc. hereby declares that this device is in compliance with the essential requirements and other relevant provisions of related Directives. The full text of the EU declaration of conformity is available at: www.asus.com/support

FCC COMPLIANCE INFORMATION

Per FCC Part 2 Section 2.1077



Responsible Party: Asus Computer International
Address: 48720 Kato Rd., Fremont, CA 94538, USA
Phone/Fax No: (510)739-3777/(510)608-4555

hereby declares that the product

Product Name : ROG CETRA TRUE WIRELESS
Model Number : ROG CETRA TRUE WIRELESS
ROG CETRA TRUE WIRELESS(L)
ROG CETRA TRUE WIRELESS(R)

compliance statement:

This device complies with part 15 of the FCC Rules. Operation is subject to the following two conditions: (1) This device may not cause harmful interference, and (2) this device must accept any interference received, including interference that may cause undesired operation.

Ver. 180125



Ukraine Certification Logo



EAC Certification Logo

Service and Support

Visit our multi-language website at <https://www.asus.com/suoport>.



<https://qr.asus.com/ab92699>

| | |
|---|---|
| Manufacturer | ASUSTek COMPUTER INC. |
| Address, City | 1 F., No. 15, Lide Rd., Beitou Dist., Taipei City 112, Taiwan |
| Authorized Representative in Europe | ASUS COMPUTER GmbH |
| Address | Harkortstrasse 21-23, 40880 Ratingen |
| Country | Germany |
| Authorized Representative in the United Kingdom | ASUSTEK (UK) LIMITED |
| Address | 1st Floor, Sackville House, 143-149 Fenchurch Street, London, EC3M 6BL, England |
| Country | United Kingdom |

Documents / Resources



[ASUS ROG CETRA True Wireless Earbuds](#) [pdf] User Guide

RCTW, 2A3PJ-RCTW, 2A3PJRCTW, RCTWL, 2A3PJ-RCTWL, 2A3PJRCTWL, RCTWR, 2A3PJ-RCTWR, 2A3PJRCTWR, ROG CETRA True Wireless Earbuds, True Wireless Earbuds

References

- [ASUS Corporate Social Responsibility](#)
- [ASUS Corporate Social Responsibility](#)

Related Manuals / Resources



[True Wireless Earbuds User Manual](#)

True Wireless Earbuds User Manual

[SENTRY LBT975 True Wireless Earbuds Instruction Manual](#)

LBT975 True Wireless Earbuds



[JAM HXEP410A True Wireless Earbuds User Guide](#)

JAM HXEP410A True Wireless Earbuds What is in the box Lights indicator Bluetooth Feature Calling Volume Battery



[Tranya T40 True Wireless Earbuds User Manual](#)

Tranya T40 True Wireless Earbuds

Leave a comment

Your email address will not be published.

Comment

Name

Email

Website

☐ Save my name, email, and website in this browser for the next time I comment.

Post Comment

[Manuals+.](#)

- [home](#)
- [privacy](#)