

Safety Instructions

Read and follow all the safety instructions:

- The product is not water resistant, be cautious when installing and using.
- Use the product with the provided power adapter only.
- Be cautious of static electricity during installation and usage. Keep the product away from sharp objects or strong corrosive chemicals.
- When bending the strip lights during installation, avoid folding the LED components as it may affect the product's life span.
- Remove nails, metal, or other conductive objects from the installation surface before attaching the strip light, as it may cause short-circuiting.
- Do not install the strip lights near any heat sources.
- Do not allow children to install the strip lights alone.
- Avoid installing the strip lights near potentially dangerous sources (e.g., candles, liquid-filled objects).

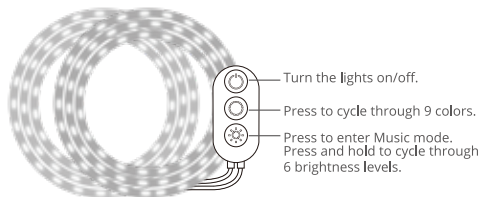
Introduction

Thanks for choosing the Govee RGB LED Strip Lights. This product is equipped with two 7.5m RGB strip light and supports app, voice (Alexa/Google Assistant), and IR remote control.

What You Get

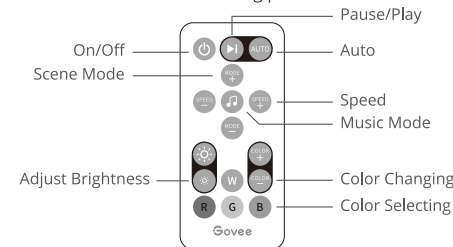
LED Strip Lights	2
Adapter	1
User Manual	1
Service Card	1

At a Glance



Using Your Remote Controller

* When using the remote controller, ensure it is aligned with the control box receiving port.



Button	Function
On/Off	Press to turn the strip lights on/off.
Play/Pause	Press to play/pause Music mode or Scene modes.
Auto	Switch the Scene mode among 7 options at random. Every mode lasts for 30s.
MODE +/-	Press to cycle forward or backward through 7 Scene modes.
Music Mode	Press to enter Music mode.

Button	Function
SPEED +/-	In Scene mode, press to speed up or slow down the changing of lights; In Music mode, press to increase or decrease the microphone's sensitivity.
Adjust Brightness	Dim or brighten the strip light.
COLOR +/-	Press to cycle forward or backward through 32 colors.
Color Select (RGBW)	Press to change the color. R: Red, G: Green, B: Blue, W: White

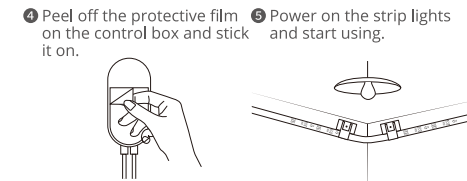
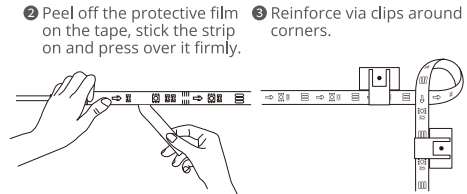
Installing Your Device

Before You Install

1. Unpack the box and check all items listed in the packing list.
2. Power on the strip lights and check whether they lights up.

Installing Steps

1. Wipe the surface to make sure it's clean and dry.



Pairing Your Device with the Govee Home App

What You Need

- A Wi-Fi router supporting the 2.4GHz and 802.11 b/g/n bands. 5GHz is not supported.

Pairing Instructions

1. Download the Govee Home app from the App Store (iOS devices) or Google Play (Android devices).
2. Turn on Bluetooth on your smartphone.
3. Open the app, tap the "+" icon in the top right corner and search for "H6154".
4. Tap the device icon and follow the on-screen instructions to complete pairing.



Controlling the Device with Your Voice

1. Open the Govee Home app, then tap the device icon to enter details page.
2. Tap the settings icon in the top right corner.
3. Select Using Guidance and the onscreen instructions to control the device using your voice.

Specifications

Length	50ft (25ft-2 Rolls)/ 15m (7.5m-2 Rolls)
Light Color	RGB
Water Resistance	NO
Control Method	App, Control Box, IR Remote Controller, Voice Control
Power Supply	Adapter 12V

Troubleshooting

❶ The adhesive tape is not strong enough.

- Make sure the installation surface is clean and dry.
- Firmly press over the strip after sticking.
- Reinforce the installation via more clips and tape.

❷ Cannot connect to Bluetooth.

- Do not skip Bluetooth connection in the app.
- Ensure Bluetooth on your smartphone has been turned on.
- Your smartphone may be incompatible with the Govee Home app. Try using a different smartphone then reconnect.

07

• Power the strip lights and your smartphone Bluetooth off then on, then try again.

• Ensure that your smartphone is within 1m/3.28ft of the strip lights when connecting.

• Clear any obstructions that are between the strip lights and your smartphone.

❸ The strip lights do not display the full selected color/Some LED beads do not light up.

• Please contact the Govee support team for rapid product replacement.

❹ Cannot sync the strip lights to the beat of my music.

- Move the control box closer to the music source.
- Clean the mic on the control box then try again.

❺ Cannot connect to Wi-Fi.

- Do not skip the Wi-Fi connecting steps in the app.
- 5GHz network is not supported. Please set the router to 2.4GHz and then reset it.
- Connect your phone to Wi-Fi and check whether the network works well.
- Make sure you have entered the correct Wi-Fi name and password.
- Change your Wi-Fi password to a brief one. 8 numbers and letters are suggested.
- Connect your smartphone hotspot to the strip lights and check whether the router works with the strip lights

08

❻ Cannot connect to Alexa.

- Unplug every connective part of the strip lights then firmly reconnect them.
- Reset your smartphone Wi-Fi.
- Unplug the adapter port then replug it.

Customer Service

🛡️ Warranty: 12-Month Limited Warranty

📞 Support: Lifetime Technical Support

✉️ Email: support@govee.com

🌐 Official Website: www.govee.com

📺 @Govee 📷 @govee_official 🎵 @govee.official

🐦 @Goveeofficial 📌 @Govee.smarthome

09

FCC Statement

This device complies with Part 15 of the FCC Rules . Operation is subject to the following two conditions:
(1) This device may not cause harmful interference, and (2) This device must accept any interference received, including interference that may cause undesired operation.
Warning: Changes or modifications not expressly approved by the party responsible for compliance could void the user's authority to operate the equipment.

NOTE: This equipment has been tested and found to comply with the limits for a Class B digital device, pursuant to Part 15 of the FCC Rules.

These limits are designed to provide reasonable protection against harmful interference in a residential installation. This equipment generates uses and can radiate radio frequency energy and, if not installed and used in accordance with the instructions, may cause harmful interference to radio communications. However, there is no guarantee that interference will not occur in a particular installation. If this equipment does cause harmful interference to radio or television reception, which can be determined by turning the equipment off and on, the user is encouraged to try to correct the interference by one or more of the following measures:

1. Reorient or relocate the receiving antenna.
2. Increase the separation between the equipment and receiver.
3. Connect the equipment into an outlet on a circuit different from that to which the receiver is connected.
4. Consult the dealer or an experienced radio/TV technician for help.

FCC Radiation Exposure Statement

This equipment complies with FCC radiation exposure limits set forth for an uncontrolled environment. This equipment should be installed and operated with minimum distance 20cm between the radiator & your body.

Non-replaceable light source.
Not intended for illumination. Only used for creating ambiance.

CAUTION:
RISK OF EXPLOSION IF BATTERY IS REPLACED BY AN INCORRECT TYPE.
DISPOSE OF USED BATTERIES ACCORDING TO THE INSTRUCTIONS.

The Bluetooth® word mark and logos are registered trademarks owned by Bluetooth SIG, Inc. and any use of such marks by Shenzhen Intellirocks Tech. Co., Ltd. is under license.

Govee is a trademark of Shenzhen Intellirocks Tech Co.Ltd.
Copyright ©2021 Shenzhen Intellirocks Tech Co.Ltd. All Rights Reserved.



User Manual



Govee Home App

For FAQs and more information,
please visit: www.govee.com

Model: H6154

RGB LED Strip Lights