

# Easy Setting Box

## User Manual

Easy Setting Box is an application that allows you to more conveniently arrange windows by splitting the monitor screen into several sections and easily switch the mouse between the smart monitor and computer.

# Table of Contents

---

## About Easy Setting Box

- 03 What is Easy Setting Box
- 03 Key Features of Easy Setting Box
- 04 User Requirements

## Easy Setting Box Install/ Uninstall

- 05 Easy Setting Box Install
- 08 Easy Setting Box Uninstall

## Easy Setting Box Start

- 09 Easy Setting Box Execute
- 14 Easy Setting Box | Exit

## Controlling the smart monitor mouse

- 15 User Requirements
- 16 Registering a smart monitor and configuring its settings
- 18 Reconnecting your smart monitor
- 19 Controlling the smart monitor mouse

## Split Screen Layout

- 21 Splitting the Screen
- 22 Split Screen Layout Overview

## Window Layout on Split Screen

## Adjusting Split Screen Grid

## Initializing Split Screen Grid

# 1

## About Easy Setting Box

### 1-1 What is Easy Setting Box

**Easy Setting Box** is an application that allows you to more conveniently arrange windows by splitting the monitor screen into several sections and easily switch the mouse between the smart monitor and computer. The application comes in handy especially when using multiple monitors, helping you easily and quickly organize and arrange several windows. Easily switch the mouse between the smart monitor and computer.

### 1-2 Key Features of Easy Setting Box

Monitor screens can be split into 2 - 6 grids vertically or horizontally. Drag the window to the split screen you desire and it will be automatically arranged in the split screen grid.

You can also move the window from its title bar directly to the split screen you desire without even dragging it.

Place the mouse pointer on the border of the screen and easily switch the mouse between the smart monitor and computer, without having to use the remote control.

## 1-3 User Requirements

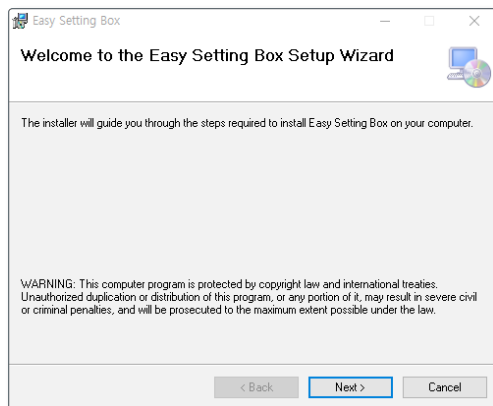
- Limitations  
This application program runs only in Samsung monitors and it is applied to other applications that support the Windows APIs.
- Operating system  
This program supports **Windows 7, Windows 8, Windows 8.1, Windows 10 (32/64 bit)**, and **Windows 11**. This user manual is written for **Windows 10**.
- Supported languages  
Deutsch, English, Español, Français, Italiano, Magyar, Polski, Português, Русский, Svenska, Türkçe, 日本語, 한국어, 简体中文
- Customer Service Center  
Main number: 1588-3366  
Homepage: <http://www.samsungsvc.co.kr>
- Supplier homepage  
Homepage: <http://www.samsung.com/sec>

# 2

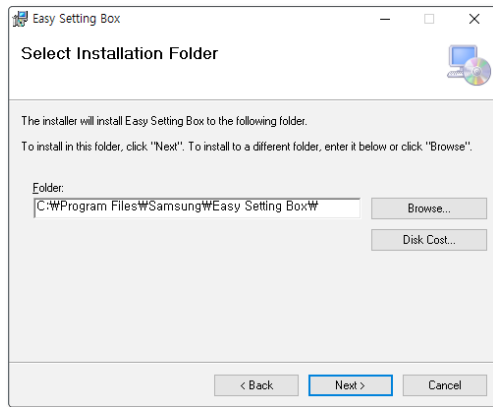
## Easy Setting Box Install/Uninstall

### 2-1 Easy Setting Box Install

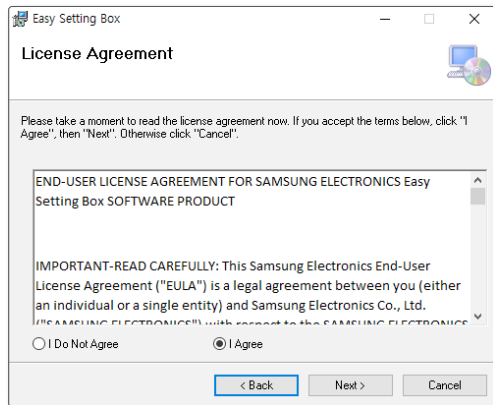
- 1 Double-click the **Easy Setting Box** installation file.
- 2 Click **Next** in the displayed Setup Wizard window.



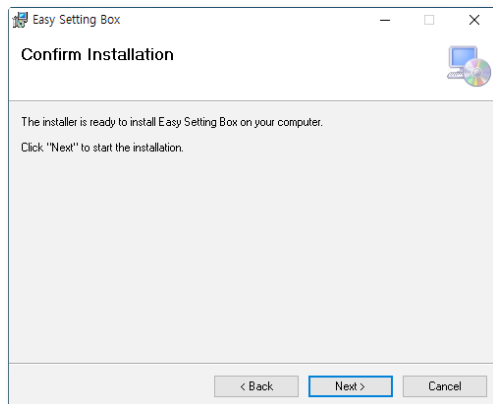
3 Specify the folder to install the program and click **Next**.



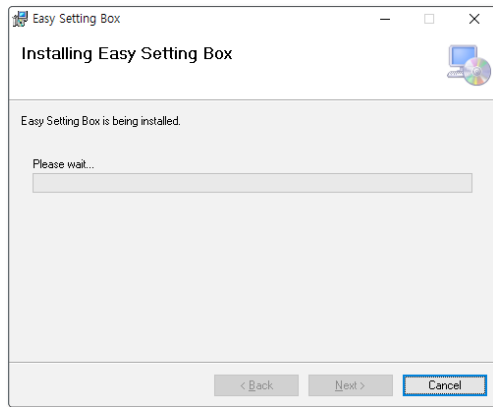
4 Select "**I Agree**" and click **Next**.



5 Click **Next**.



6 Click **Close** to complete the installation.



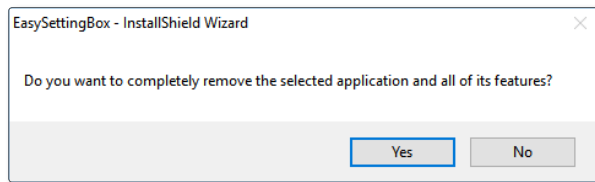
7 The executable **Easy Setting Box** icon is created on the desktop when installation is complete. To start the program, double-click the icon.



## 2-2 Easy Setting Box Uninstall

In an error occurs in the installed program, first exit the **Easy Setting Box** and proceed with the following steps to uninstall the program.

- 1 Go to **Start** → **Settings** → **App** and to **App and Features** to find **Easy Setting Box**.
- 2 Click **Easy Setting Box**, and then click **Uninstall**. Click **Yes** to start program uninstall.





# 3

## Easy Setting Box Start

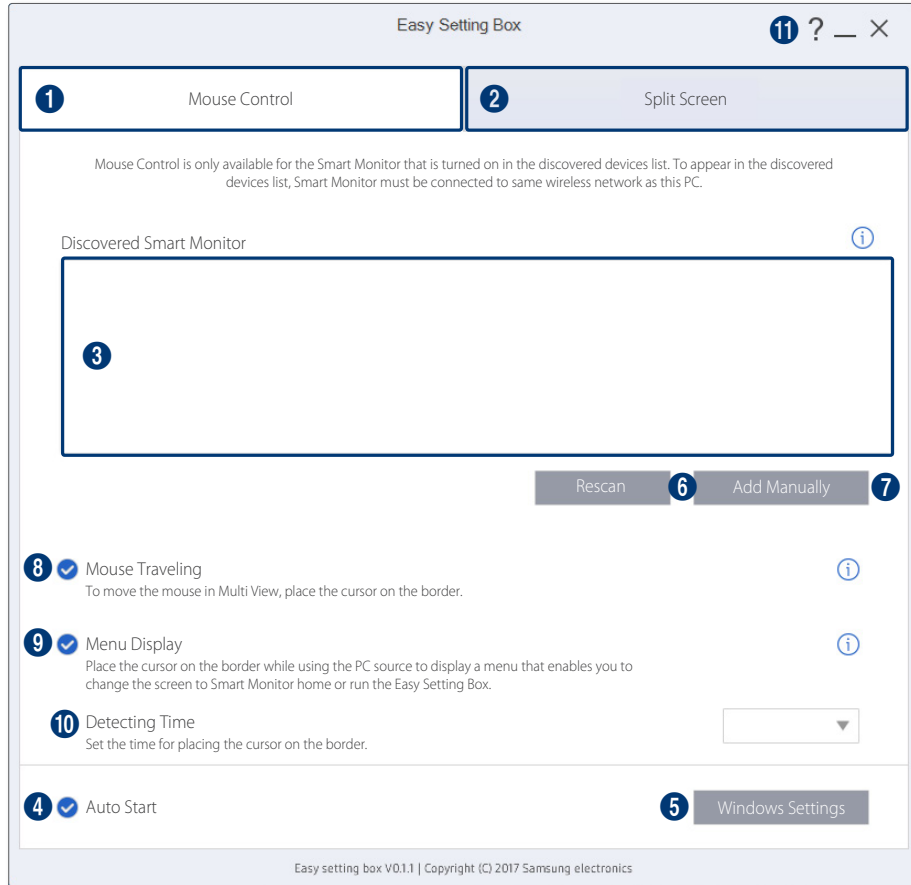
### 3-1 Easy Setting Box Execute

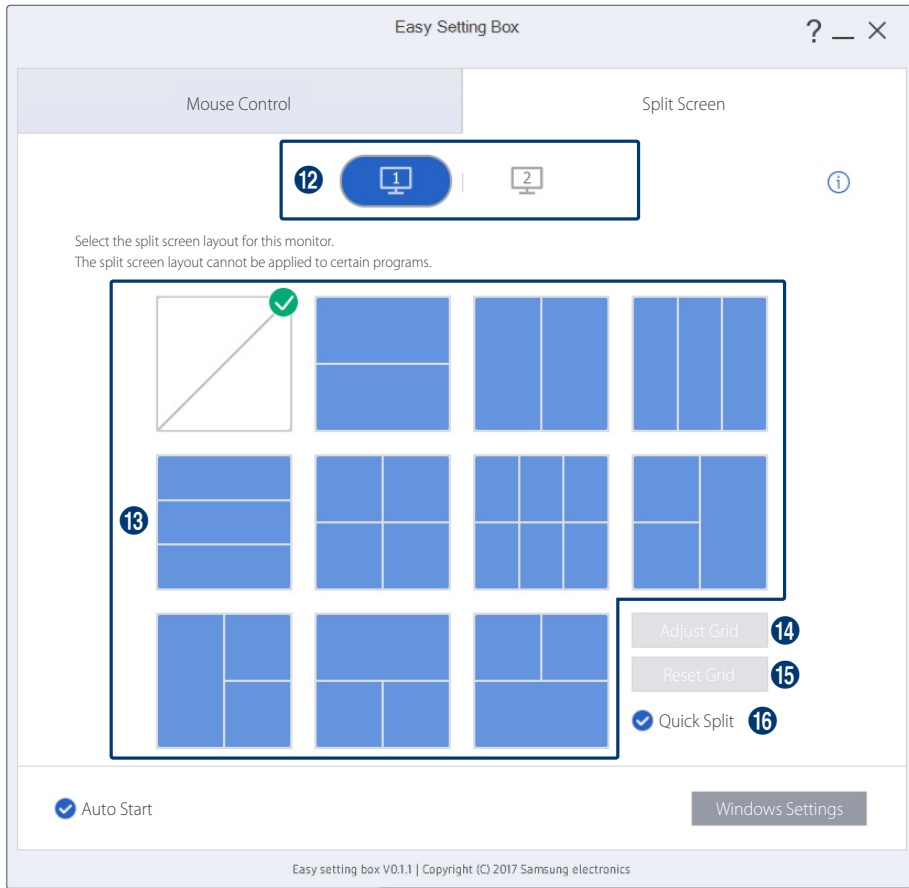
Double-click **Easy Setting Box** from the background screen or click the **Start** button, and then select **Easy Setting Box** from the installed Apps list.

When **Easy Setting Box** is executed it automatically recognizes the current monitor and designates the number corresponding to each monitor.

# Easy Setting Box Look Around

Run **Easy Setting Box** and the following screen will be displayed.





- 
- 1 Register your smart monitor and use the mouse control feature.

---

  - 2 Split the screen.

---

  - 3 Added smart monitors are displayed in a list. Click a monitor from the list, and connect or disconnect it.  
  
Device names can be viewed from the smart monitor (**Home > Menu > Settings > All Settings > Connect > Device Name**).

---

  - 4 Tick here to allow the program to start automatically upon starting the **Windows** operating system.

---

  - 5 This button brings up the Display Setting dialog box of the **Windows** control panel. Set the main monitor and change the resolution of the monitor. Terms and functions may vary depending on the version of the **Windows** operating system on your computer.

---

  - 6 Search for smart monitors again.

---

  - 7 Manually add smart monitors.

---

  - 8 Select whether to switch to mouse control mode while the smart monitor multi-view is in use.

---

  - 9 Select whether to switch to the Home screen while the smart monitor single-view (single external input) is in use.

---

  - 10 Specify the minimum time required to recognize the cursor positioned on the edge.

---

  - 11 Click the **?** button to view the user manual. Click the **Minimize** button to minimize the **Easy Setting Box** window to the Taskbar. To minimize the window to the system tray area, click the **Close** button.

---

  - 12 Tabs are displayed according to the number of monitors currently in use. Supports up to 4 monitors .

---

  - 13 The split screen layout currently in use is shown as ticked. Click to select the desired split screen layout configuration.

---

  - 14 The split screen grids can be adjusted. For more details, refer to the following. [▶ Adjusting Split Screen Grid](#)

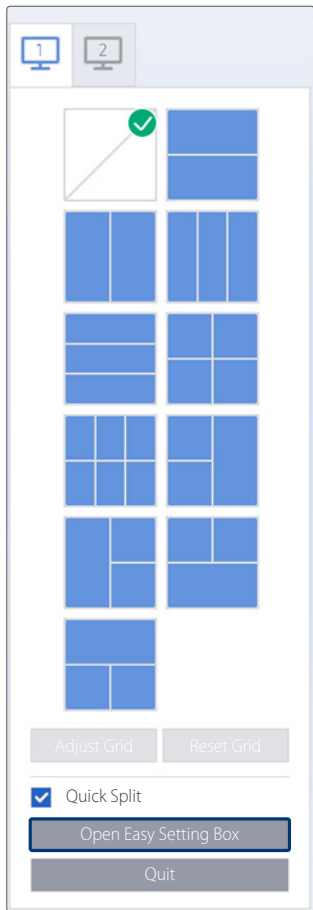
---

  - 15 The split screen grids can be initialized to the default size. For more details, refer to the following. [▶ Initializing Split Screen Grid](#)

---

  - 16 Can turn on or off the **Quick Split** function. You can directly place the window with the desired split screen. When you press the Ctrl key while moving the window, the **Quick Split** function is temporarily enabled or disabled. [▶ Window Layout on Split Screen](#)
-

In the System Tray area, right-click the **Easy Setting Box** icon and the screen below will be displayed.  
To display the main screen of Easy Setting Box, click **Open Easy Setting Box**.



## 3-2 Easy Setting Box | Exit

In the System Tray area, right-click on the Easy Setting Box icon and click **Quit**.

# 4

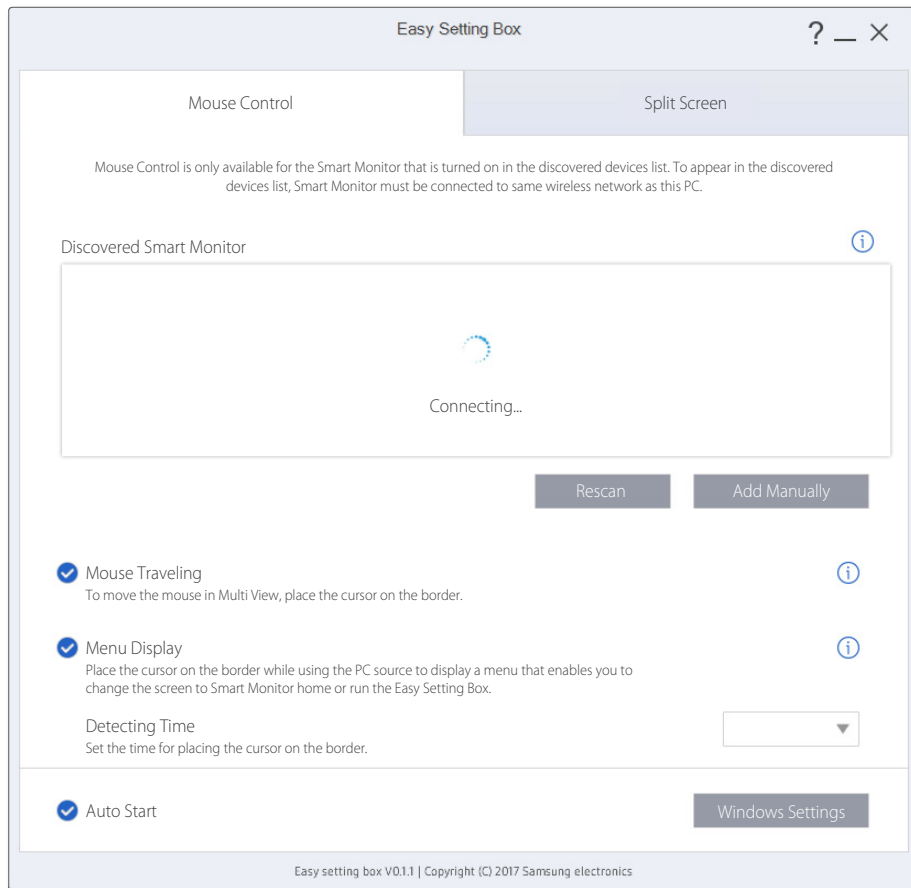
## Controlling the smart monitor mouse

### 4-1 User Requirements

- Add a smart monitor that supports the mouse control feature to Easy Setting Box.
- Ensure that at least one smart monitor is in use.
- Connect the smart monitor and the PC where the Easy Setting Box is installed to the same wireless network.
- To use the Easy Setting Box application from multiple computers, make sure to install the application on each of the computers.
- Make sure that physical cables are connected and cable connection settings are configured in the following order: the mouse ↔ smart monitor ↔ computer. Connect the USB mouse to the smart monitor, and then use a USB hub cable (a USB-B or USB-C cable) to connect a computer to the smart monitor. Next, configure the USB hub cable connection settings from the smart monitor.
- This feature only supports USB input devices and does not support Bluetooth input devices.
- This feature may not be supported on some smart monitors.

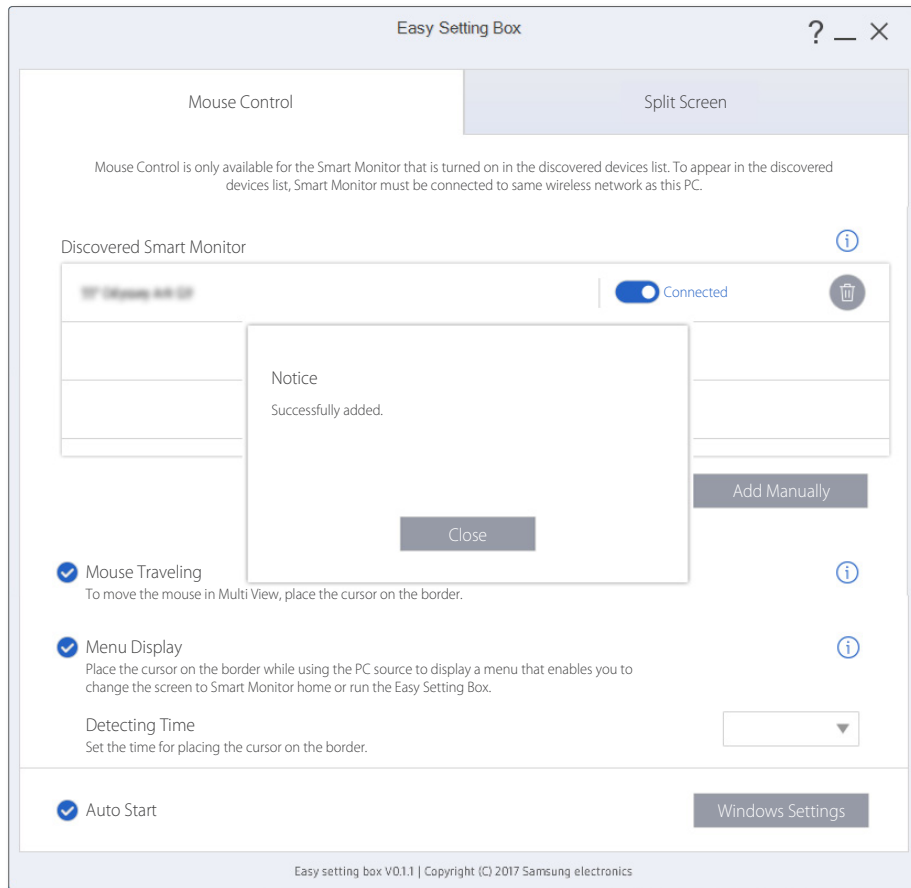
## 4-2 Registering a smart monitor and configuring its settings

- 1 Open Easy Setting Box.
- 2 Click the Mouse Control tab.
- 3 Click **Rescan** or **Add Manually**, and register your smart monitor.





#### 4 Smart monitor registration is complete.

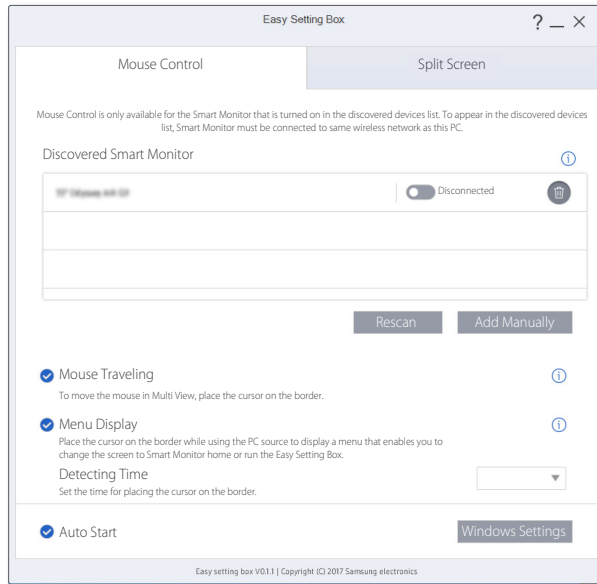


- If the Move Mouse checkbox is selected, mouse control is possible while the smart monitor multi-view is in use.
- If the Show Menu checkbox is selected, it is possible to switch to the Home screen while the smart monitor single-view (single external input) is in use.

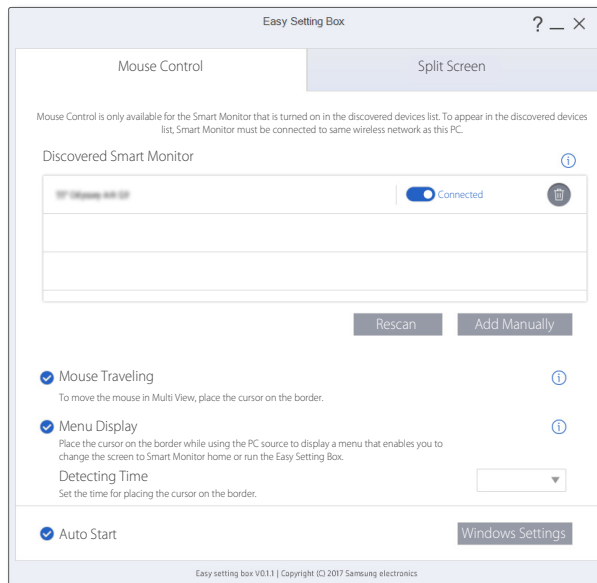
## 4-3 Reconnecting your smart monitor

Reconnect your smart monitor to the network if it is disconnected.

- 1 Deselect the checkbox for the monitor to reconnect, to change the monitor status to Disconnected.



- 2 Select the checkbox for the monitor. Connection is complete.



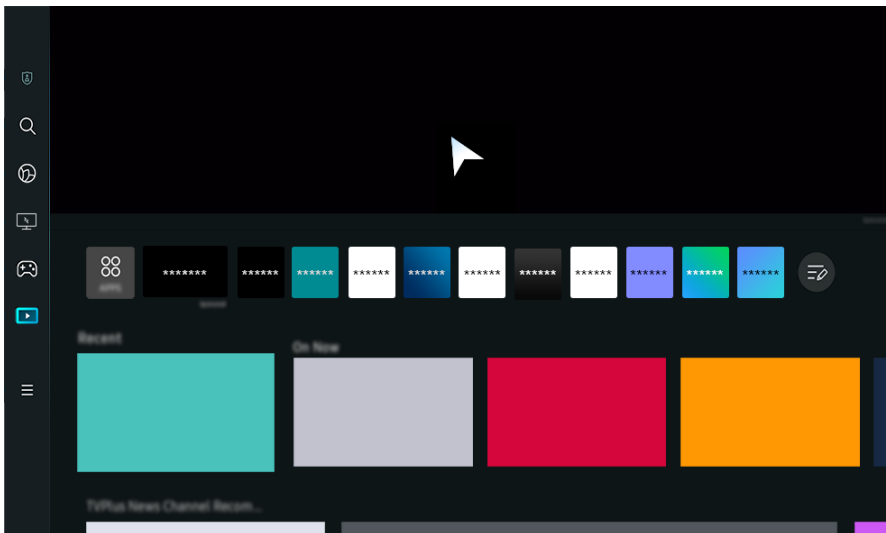
## 4-4 Controlling the smart monitor mouse

### When the smart monitor single-view (single external input) is in use

- 1 Leave the mouse pointer on the border of the screen for a specified amount of time.
- 2 Menus appear after the specified period of time elapses.



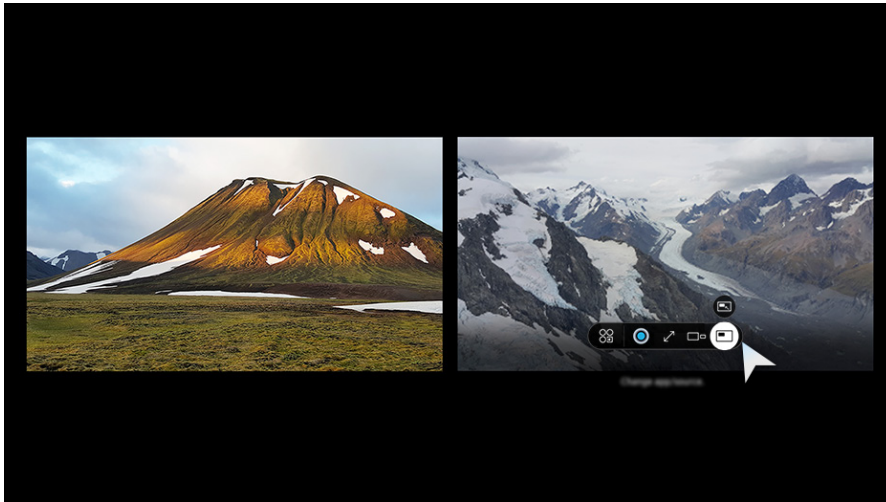
- 3 Select the Home mode from the menus. The connected monitor switches to Home mode. The mouse switches to the smart monitor.



## When the smart monitor multi-view is in use

---

- 1 Leave the mouse pointer on the border of the screen for a specified amount of time.
- 2 The mouse switches to the smart monitor after a specified amount of time.



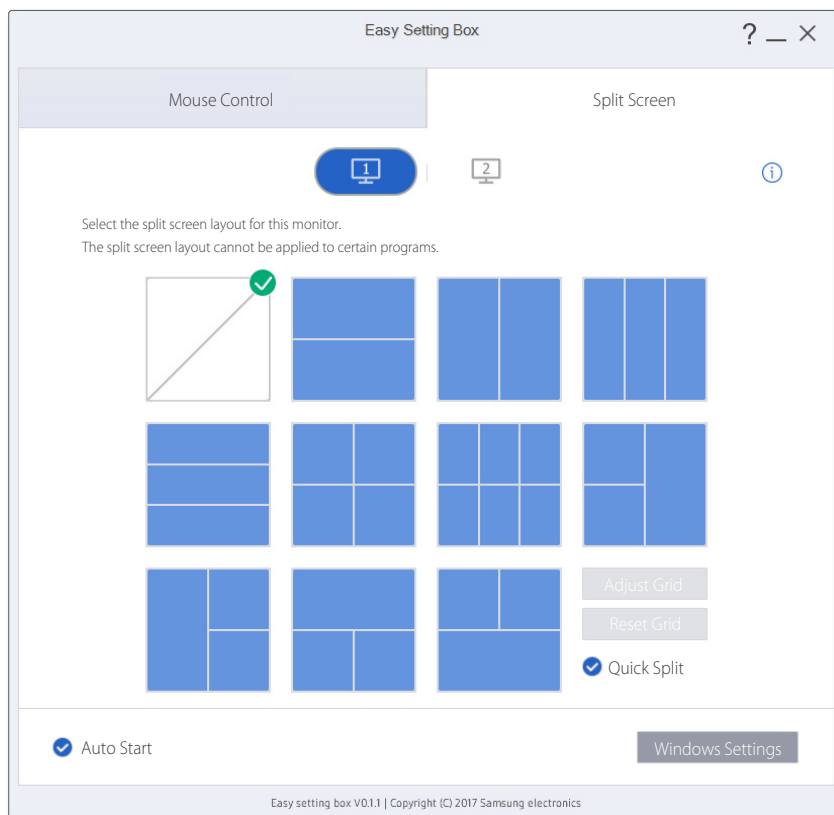
# 5

## Split Screen Layout

### 5-1 Splitting the Screen

See below to split the screen.

- 1 Open **Easy Setting Box**.
- 2 Click the monitor of which screen to split from the upper tab.
- 3 Click the split screen layout you desire. A red division line will appear briefly on the screen and then disappear depending on the selected split screen layout. A tick mark appears on the upper-right edge of the selected split screen layout.



## 5-2 Split Screen Layout Overview

Monitor screens can be split into 2 - 6 grids vertically or horizontally.



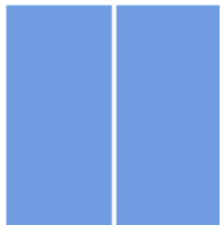
### Screen split function disabled.

The screen will not be split.



### Horizontal Split 2

Displays a grid horizontally dividing the desktop into two halves. This layout allows you to arrange 2 equal sized windows side by side vertically.



### Vertical Split 2

Displays a grid vertically dividing the desktop into two halves. This layout allows you to arrange 2 equal sized windows side by side horizontally.



### Vertical Equal Split 3

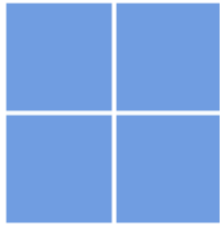
Displays a grid vertically dividing the desktop into 3 screens of equal size allowing you to assign a different window for each screen.

---



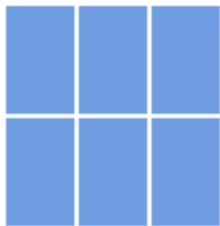
### **Horizontal Split 3**

The section is horizontally split into three equal subsections on the desktop. You can arrange three windows in these subsections.



### **Equal Split 4**

Displays a grid vertically dividing the desktop into 4 screens of equal size allowing you to assign a different window for each screen.



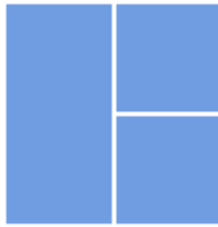
### **Equal Split 6**

Displays a grid vertically dividing the desktop into 6 screens of equal size allowing you to assign a different window for each screen.



### **Split 3 (Main at Right)**

Displays a grid dividing the desktop into 3 screens with the larger screen on the right and the other 2 smaller screens (equal size) side by side vertically.



### **Split 3 (Main at Left)**

Displays a grid dividing the desktop into 3 screens with the larger screen on the left and the other 2 smaller screens (equal size) side by side horizontally.



### **Split 3 (Main at Top)**

Displays a grid dividing the desktop into 3 screens with the larger screen at the top and the other 2 smaller screens (equal size) side by side vertically.



### **Split 3 (Main at Bottom)**

Displays a grid dividing the desktop into 3 screens with the larger screen at the bottom and the other 2 smaller screens (equal size) side by side vertically.

---

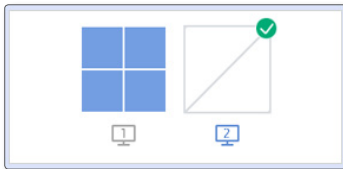


# 6

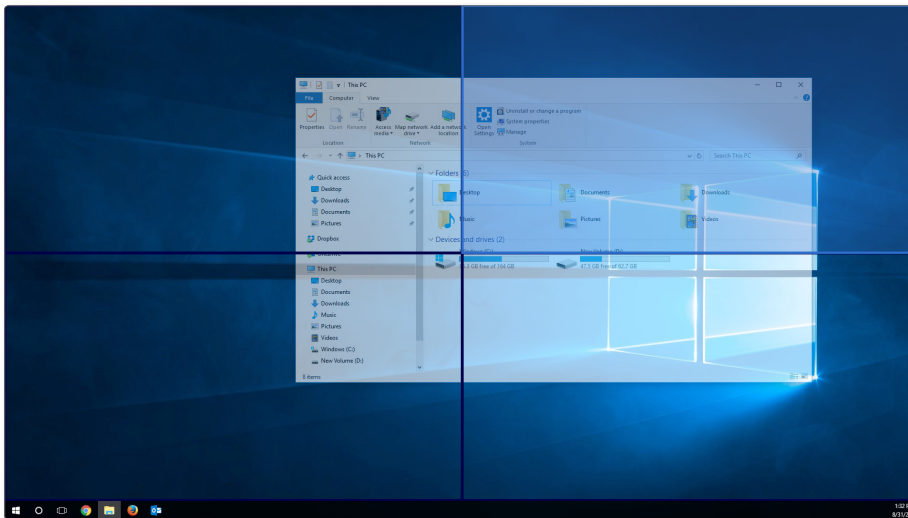
## Window Layout on Split Screen

You can directly place the desired split screen by using the mouse after splitting the screen. When you press the Ctrl key while moving the window, the **Quick Split** function is temporarily enabled or disabled.

- 1 If you drag the title bar on the application screen while holding down the left mouse button, the **Quick Split** layout appears in the top center of the monitor.



- 2 Move to the desired location and then configure the split screen. The division line of the grid to assign will be shown in blue.



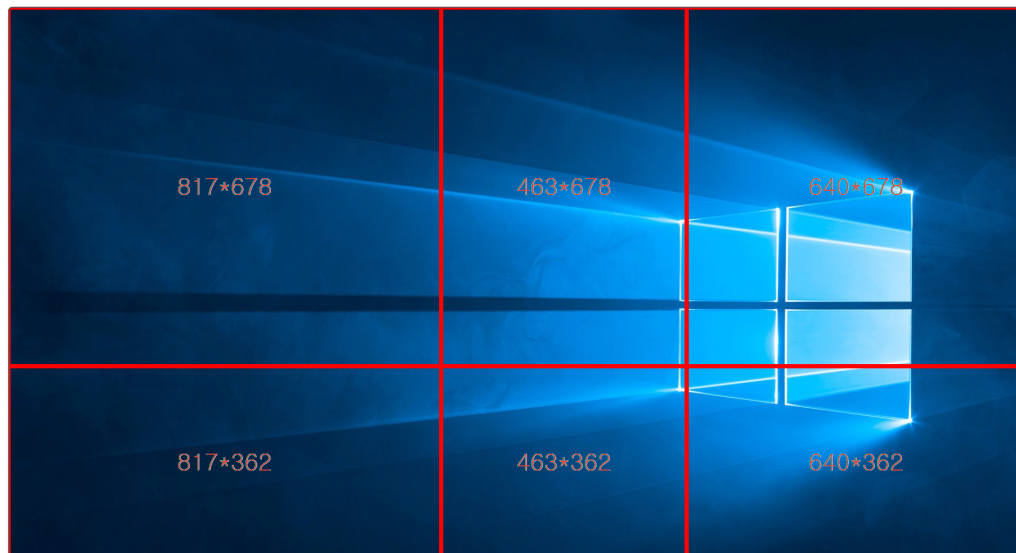
- 3 Release the mouse button and the window will be placed in the split screen grid accordingly.

# 7

## Adjusting Split Screen Grid

The split screen grids can be adjusted with a mouse. See the procedure below to adjust the split screen grids.

- 1 Open **Easy Setting Box**.
- 2 Select the monitor to adjust the split screen grid from the upper tab.
- 3 Click **Adjust Grid**. A red division line will be shown on the monitor screen.
- 4 Place the mouse pointer on the division line of the split screen you desire to adjust.
- 5 Click and hold the left mouse button and drag the division line to the position you desire. Specific resolution of the split screen will be displayed by the position of adjusting division line.



- 6 Stop the mouse pointer and release the left-mouse button to adjust the split screen grid.

# 8

## Initializing Split Screen Grid

The split screen grids can be initialized to the default size.

- 1 Open the **Easy Setting Box** window.
- 2 Select the monitor to initialize the split screen grid to the default size from the upper tab.
- 3 Click **Reset Grid**.

**SAMSUNG**