



**Read these instructions for use carefully and keep them for later use, be sure to make them accessible to other users and observe the information they contain.**

### Table of contents

1. Signs and symbols .....	8
2. Intended purpose .....	9
3. Intended use .....	9
4. Safety notes .....	9
5. Device description .....	10
6. Operation .....	10
7. Cleaning .....	12
8. Technical data .....	12
9. Disposal .....	12

### Included in delivery

- 1 x HS 60 hair straightening brush
- These instructions for use






## **WARNING**

- This device may be used by children over the age of eight and by people with reduced physical, sensory or mental skills or a lack of experience or knowledge, provided that they are supervised or have been instructed on how to use the device safely and are fully aware of the consequent risks of use.
- Children must not play with the device.
- When using the device in the bathroom, unplug the plug after use as water in the vicinity constitutes a danger, even when the device is switched off.
- Never use the device near baths, wash basins, showers or other objects containing water or other liquids – risk of electric shock!
- As an additional safety measure, we recommend the installation of a residual-current-operated protective device (RCD) with a rated operational current not exceeding 30 mA in the bathroom circuit. Your local electrical specialist can provide you with the relevant information.
- If the mains connection cable of this device is damaged, it must be disposed of. If it cannot be removed, the device must be disposed of.

## **1. Signs and symbols**

The following symbols are used in these instructions for use, on the packaging and on the type plate for the device:

	<b>DANGER</b>	This device must not be used near to water or in water (e.g. in a wash basin, or in the shower or bath) – danger of electric shock!
	<b>WARNING</b>	Warning notice indicating a risk of injury or damage to health.
	<b>CAUTION</b>	Safety note indicating possible damage to the device/accessory.

 <b>Note</b>	Note on important information.
	Observe the instructions for use
	Disposal in accordance with the Waste Electrical and Electronic Equipment EC Directive – WEEE
	Manufacturer
	This product satisfies the requirements of the applicable European and national directives.

## 2. Intended purpose

Gently untangle and simultaneously quickly and gently straighten your hair using the Beurer HS 60 hair straightening brush. The hair straightening brush also has an integrated ion function. The hair straightening brush produces negative ions that counteract the static charge of your hair. This prevents hair from becoming statically charged and sticking out.

The hair straightening brush has 9 temperature settings from 120°C to 200°C. Thanks to the 9-step temperature regulation, you can select the correct temperature for your hair type. The button lock prevents the temperature from being adjusted unintentionally.

A short heat-up phase means that the hair straightening brush is ready for use in minutes. The automatic switch-off protects the device against overheating.

## 3. Intended use

### **Warning**

The hair straightening brush is solely intended for personal use to comb and straighten real human head hair. Never use the hair straightening brush on other body parts, animals or objects! Do not use the hair straightening brush on synthetic hair or hair extensions.

The hair straightening brush is intended for private use only. The hair straightening brush must only be used for the purpose for which it is designed and in the manner specified in the instructions for use. Improper use can be dangerous.

The manufacturer is not liable for damage resulting from improper or careless use.

## 4. Safety notes

### **DANGER**

**To avoid damage to health, we strongly advise against using the device in the following situations:**

- Never submerge the device in water or other liquids! Risk of electric shock!
- If the device should fall into water despite following all safety precautions, immediately pull the mains plug from the socket! Do not reach into the water! Risk of electric shock!
- Have the device checked by an authorised specialist workshop before using it again! Danger to life due to electric shock!
- If the device has been dropped or has suffered any other damage, it must no longer be used. Risk of electric shock and injury!
- If there is visible damage to the device or the mains cable/plug. If you have any doubts, do not use the device and contact your retailer or the specified Customer Service address. Risk of electric shock!
- Keep packaging material away from children – risk of suffocation!
- Store the device out of the reach of children.
- Do not use extension cables in the bathroom to ensure the mains plug can be accessed quickly in an emergency.

## **WARNING**

### To avoid damage to health, please note the following:


- Ensure that no highly flammable liquids are located near the device. Risk of fire!
- Place the device on non-flammable surfaces only. Risk of fire!
- The device must not be covered – risk of fire!
- Do not use the device on synthetic hair – risk of fire!

## **Note**

- Before using the device, remove all packaging material.
- Only connect the device to a socket that has the voltage shown on the type plate.
- Only pull the mains cable [7] from the socket by the mains plug.
- Under no circumstances should you open or repair the device yourself, as faultless functionality can no longer be guaranteed thereafter. Failure to comply will result in voiding of the warranty.
- In the event of a fault or damage, have the device repaired by a certified specialist workshop.
- Never leave the device unattended during use.
- Do not use the device outside.
- If you pass on the device to someone else, make sure to also pass on these instructions for use.

## 5. Device description



1 Bristles	5 ON/OFF button 
2 Operation indicator	6 Hanging loop
3 Temperature display	7 Mains cable
4 +/- buttons (to adjust the temperature)	

## 6. Operation

### **WARNING**

- Position yourself on a dry, non-conductive surface. Risk of electric shock!
- Make sure that your hands are dry! Risk of electric shock!
- Your hair must be dry! Risk of electric shock!
- Do not cover the device. Place the hot/switched on device on a firm, level and heat-resistant surface.
- The device can become very hot. When the device is hot, it must only be held using the handle – risk of burns and fire!
- Do not touch the bristles [1] with your hand. Risk of burns!


- Switch the device off immediately if it is faulty or not working properly.



## IMPORTANT

- Untangle the mains cable [7] if it is twisted.
- Do not pull, twist or bend the mains cable [7] and do not pull or route it over/on sharp, pointed objects or hot surfaces.
- Do not jam the mains cable [7] in drawers or doors, for example. Damaged or tangled mains cables increase the risk of electric shock!

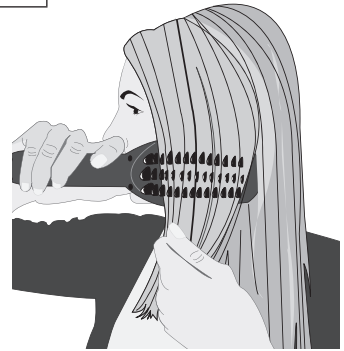
## Straightening hair

1. Ensure that your hair is clean, dry, unknotted and free of styling products (the exception to this is special products designed to help straighten hair).
2. Insert the mains plug into a socket.
3. To switch on the hair straightening brush, press and hold the ON/OFF  switch [5] for three seconds. The operation indicator glows red.
4. Use the +/- buttons [4] to set the desired temperature according to the type of hair. The temperature display [3] flashes during the heat-up phase. When the desired temperature has been reached, the temperature display will light up permanently. The temperature can be fixed by pressing the on/off switch [7] twice. "LOC" appears on the temperature display [3]. You can only switch off the hair straighteners if the button lock is deactivated. To deactivate the button lock, press the on/off switch [7] again 2 times. "LOC" disappears from the temperature display [3].
5. We recommend the following temperature setting depending on your hair type:



120 °C to 140 °C	For fine, brittle, coloured or bleached hair
140 °C to 160 °C	For normal hair
160 °C to 200 °C	Thick and resistant hair

6. Part the hair into individual sections of approximately 6 to 7 cm. Hold the strands taut.
7. Slowly move the hair straightening brush from the roots to the tips in a fluid motion. Do not hold the hair straightening brush in one place for more than two seconds. This will achieve the best results without subjecting your hair to excess stress or damage.
8. You can style the ends of your hair by turning the hair straightening brush inwards or outwards before running it over the tips of the hair.



## WARNING


To avoid burns, do not touch the bristles during use.



## Note

The hair straightening brush has an automatic switch-off function. The hair straightening brush switches off automatically after 30 minutes.

## After use

1. To switch off the hair straightening brush, press and hold the ON/OFF  switch [5] for three seconds. The operation indicator [2] turns off and OFF is displayed in the temperature display. The hair straightening brush is now turned off.
2. After each use, pull the mains plug out of the socket.
3. Place the hair straightening brush on a non-flammable surface. Allow the hair straightening brush to cool down completely.

## **WARNING**

Do not wind the mains cable [7] around the hair straightening brush. Risk of fire!  
Store the hair straightening brush in a dry place out of the reach of children.

## 7. Cleaning

### **WARNING**

- Always pull the mains plug out of the socket before cleaning the device. Risk of electric shock!
- Ensure that no water gets inside the device! Risk of electric shock!
- Do not clean the device with highly flammable liquids! Risk of fire!

### **Note**

- Your device is maintenance-free.
- Protect the device from dust, dirt and humidity.
- Do not clean the device in the dishwasher.
- Do not use any aggressive, caustic, abrasive, or corrosive cleaning products or hard brushes.
- The casing of the hair straightening brush and the bristles may be cleaned with a soft cloth dampened with warm water.

### **WARNING**

- Allow the hair straightening brush to dry completely after cleaning before using it again.

## 8. Technical data

Weight	approx. 430g
Voltage supply	AC 100-240V, 50-60 Hz
Power consumption	45W
Temperature range	approx. 120°C to 200°C
Protection class	II
Ambient conditions	Only approved for indoors
Permissible temperature range	-10 to +40°C

Subject to technical changes

## 9. Disposal

For environmental reasons, do not dispose of the device in the household waste at the end of its useful life. Dispose of the device at a suitable local collection or recycling point. Dispose of the device in accordance with EC Directive – WEEE (Waste Electrical and Electronic Equipment). If you have any questions, please contact the local authorities responsible for waste disposal.

