

SENCOR®

SHB 9000WH



CORDLESS HAND BLENDER

Translation of the original manual

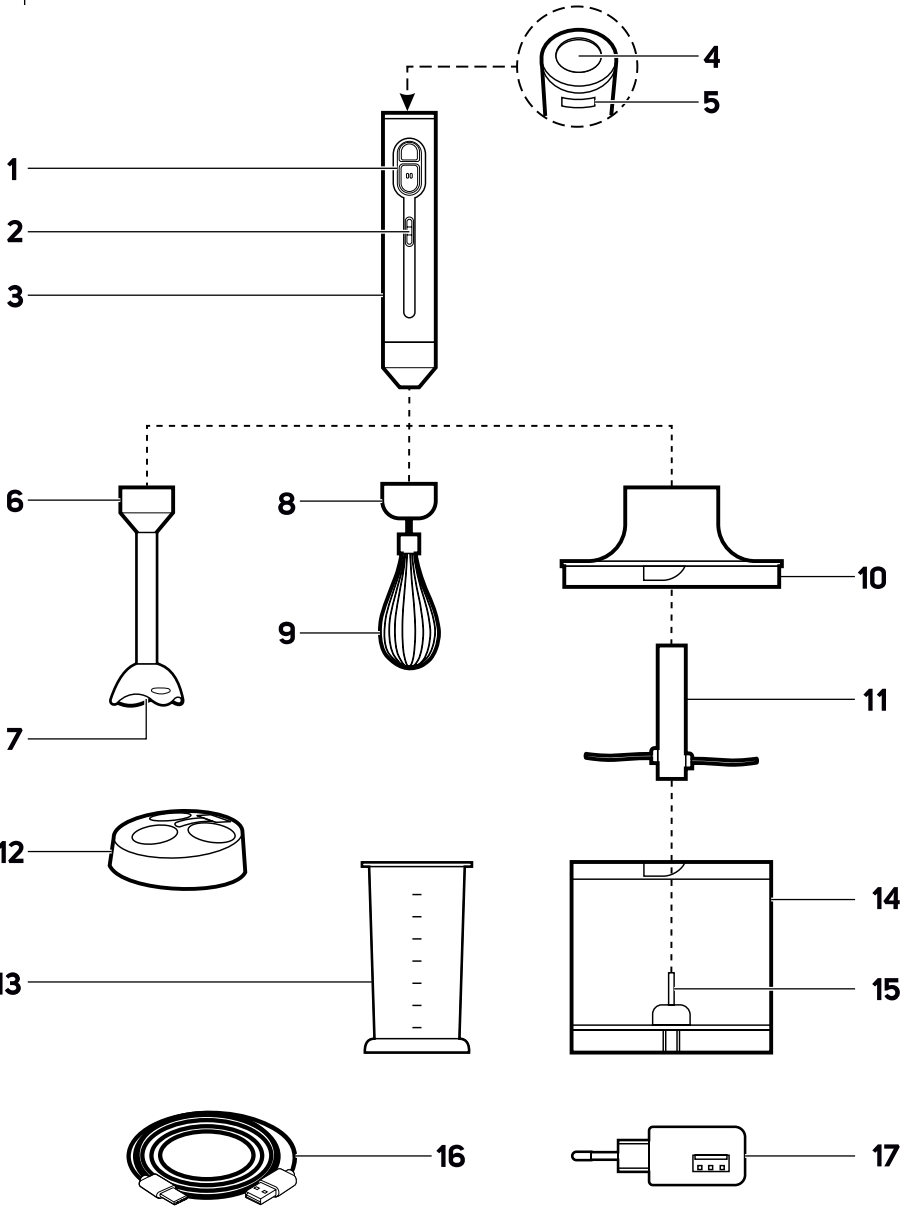


SENCOR®

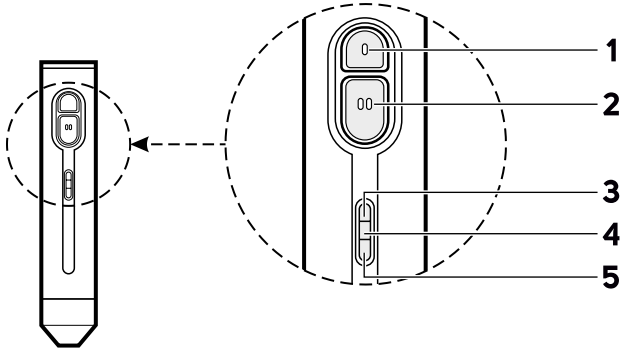
SHB 9000WH



A



B



EN Cordless hand blender

Important safety instructions

READ CAREFULLY AND STORE FOR FUTURE USE.

General warnings

- This appliance may not be used by children. Keep the appliance and its power cord away from children.
- The appliance may be used by persons with reduced physical, sensory or mental capabilities or with a lack of experience and knowledge, if they are supervised or have been instructed to use the appliance in a safe manner and understand the potential dangers.
- Children must not play with the appliance.
- Cleaning and maintenance performed by the user must not be performed by unsupervised children.
- In the event that the power cord is damaged, have it repaired at a professional service centre to prevent causing a dangerous situation. It is forbidden to use the appliance if it has a damaged power cord.



Warning:

Incorrect use may lead to injuries.

- Be especially careful not to injure yourself on the sharp cutting edges when handling the chopping blades, especially when removing the blades from the blending jar, when emptying the container and when cleaning it.

- The surfaces of the appliance that come into contact with food must always be cleaned according to the instructions in this user's manual.
- Always turn off the appliance and disconnect it from the power socket if you will not be using it and if you will be leaving it without supervision, before assembly, disassembly, cleaning or moving it.
- Before replacing the accessories or accessible parts that move during use, turn the appliance off and disconnect it from the power supply.

Electrical safety

- Before connecting this appliance to a power socket, make sure that the voltage stated on its rating label corresponds to the voltage in your power socket.
- Connect the appliance only to a properly grounded socket. Do not use an extension cord.
- Fully unwind the power cord before using it.
- Do not connect and disconnect the power cord and adapter to and from the power socket with wet hands.
- Ensure that the adapter plug contacts do not come into contact with water or any other liquid. If precisely this happens, carefully dry the power plug before using it again.
- Do not disconnect the appliance from the power socket by pulling on the power cord. This could damage the power cord or the power socket. Disconnect the power cord from the power socket by pulling on the plug.
- Do not place heavy items on the power cord. Make sure the power cord does not hang over the edge of a table or that it is not touching a hot surface or sharp objects.
- Keep the power cord and adapter dry.
- If the power cord or the adapter is damaged, it must be replaced by the manufacturer, its service technician or by a similarly qualified person, as this will prevent a dangerous situation from arising. It is forbidden to use a damaged power cord or adapter.
- Do not wind the power cord around the appliance.
- Always turn off the appliance and disconnect it from the power socket when not using it, when leaving it without supervision and before removing or replacing accessories, and before cleaning, maintenance or storage.
- The appliance is equipped with a built-in long-life battery that can only be removed at a professional service centre. Never attempt to remove it from the appliance yourself.



Attention:

Never disassemble the appliance for the purpose of removing the battery. Never short circuit the appliance or throw it into a fire. Incorrect use, risks releasing toxic substances or causing a fire or explosion.

- Do not repair the appliance yourself or make any adjustments to it. Have all repairs or adjustments of the appliance performed at an authorised service centre. Tampering with the appliance during the warranty period may void the warranty.
- To prevent the risk of injury by electrical shock, never submerge the motor unit and its power cord in water or any other liquid, or wash these parts under running water.
- Always turn off the appliance and disconnect it from the power socket when you have finished charging it.
- If the appliance falls into water, under no circumstances continue using it, but rather hand it over to an authorised service centre for inspection.
- This appliance is designed for household use. Do not use it for commercial purposes or for other purposes for which it is not intended.

Safety during use

- This appliance is designed for household use and is intended for blending, chopping and whisking ingredients. It is also suitable for processing hard ingredients such as coffee beans, cocoa beans, ice cubes, nutmeg, etc.
- Do not use the appliance in an industrial environment or outdoors. Do not use it for any other purposes than those intended.
- The appliance is intended for domestic use and similar locations such as:
 - kitchens in stores; offices and other workplaces;
 - in agriculture;
 - for guests of hotels, motels and other similar locations;
 - in bed and breakfast establishments.
- This appliance is not intended to be operated using an external timer switch or a remote control system.

- Use the appliance and its accessories in accordance with the instructions contained in this user's manual.
- Only use the appliance with the original accessories that came with it.
- Before every use, check the selected accessory for damage. Never use the appliance with a damaged accessory.
- Do not place the appliance or its accessories on an electric or gas stove or in its vicinity, on the edge of a table or on an unstable surface. Only place the appliance on an even, dry and stable surface.
- Do not expose the appliance and its accessories to the outdoor environment, extreme temperatures, direct sunlight, excessive humidity or excessively dusty environments.
- Do not place the appliance and its accessories near heaters, open fires or other sources of heat.
- Make sure that the appliance is correctly assembled before putting it into operation.
- Do not touch moving rotating parts during operation. Otherwise, this could result in injury.
- Be especially careful when handling hot liquids and foodstuffs. Hot steam or splattering hot foods and liquids may cause scalding. For reasons of increased safety, allow hot foods and liquids to cool down to at least 45 °C before blending.
- The operating time of the appliance is 1 minute. Before turning it on again, allow it to cool down for at least 10 minutes. When using the appliance to blend sticky or harder foodstuffs, interrupt operation already after 30 seconds.
- Do not continuously mix dry, thick or heavy mixtures for longer than 10 seconds. Stop using the appliance and mix the ingredients together before continuing.
- Do not turn on the appliance when it is empty. Incorrect use of the appliance may negatively affect its lifetime.
- Check that the motor unit is turned off and that the rotating parts have come to a complete stop before disassembling the appliance into its individual parts.
- Do not perform any maintenance on the appliance other than cleaning the individual components as described in this user's manual.
- Never use an appliance that is damaged in any way.
- Do not use the appliance if it has fallen on the floor, if it was submerged in water, if it is not functioning correctly or if it is damaged in any other way.
- When handling the blade assembly of the blender or chopper unit, especially when taking the blade assembly out of the bowl, when emptying the bowl and cleaning it, take special care to avoid injury by the blades.
- Do not use the appliance when it is not functioning properly or showing signs of damage.
- In order to prevent a hazardous situation arising, do not repair the appliance yourself or modify it in any way. Have all repairs performed at an authorised service centre. By tampering with the appliance, you risk voiding your legal rights arising from unsatisfactory performance or quality warranty.
- Store the appliance in a dry environment.

- Prior to using this appliance, please read the user's manual thoroughly, even in cases, when one has already familiarised themselves with previous use of similar types of appliances. Only use the appliance in the manner described in this user's manual. Keep this user's manual in a safe place where it can be easily retrieved for future use. In the event that you hand this appliance over to somebody else, make sure to also include this user's manual.
- Carefully unpack the appliance and take care not to throw away any part of the packaging before you find all its parts. We recommend saving the original cardboard box, packaging material, purchase receipt and responsibility statement of the vendor or warranty card for at least the duration of the legal liability for unsatisfactory performance or quality. In the event of transportation, we recommend that you pack the appliance in the original box from the manufacturer.

DESCRIPTION OF THE APPLIANCE

- | | |
|--|--|
| A1 Speed control buttons | A9 Whisk |
| A2 Battery power level indicators | A10 Chopper bowl lid with gear system |
| A3 Body of the appliance (motor unit) | A11 Chopper with blade assembly |
| A4 Safety button | A12 Base stand |
| Secures the appliance against being accidentally started | A13 Measuring cup, volume 700 ml |
| A5 USB slot | A14 Chopper bowl, volume 500 ml |
| A6 Removable blender stick attachment | A15 Central pin |
| A7 Blade assembly | A16 USB power cable |
| A8 Whisk attachment with gear system | A17 Power cable adapter |

- | | |
|--|---|
| B1 Low speed button (I) | B4 Medium battery capacity indicator |
| B2 High speed button with pulse function (II) | B5 Low battery capacity indicator |
| B3 High battery capacity indicator | |

PURPOSE OF USE

STICK BLENDER ATTACHMENT

- This stainless steel stick blender is suitable for blending soft ingredients and liquids. It is used for effective blending of ingredients for smoothies, various types of cocktails, soups, sauces, spread, baby food, etc.

WHISK

- The stainless steel whisk is suitable for preparing light batters or for whipping cream, egg whites, dessert creams, liquid sponge cake doughs, mayonnaise, etc. Do not use it to whisk thick doughs.

CHOPPER

- It is suitable for chopping tougher ingredients such as nuts, herbs, cheeses, fruit and vegetables in their raw state or even well diced meat. It is also suitable for chopping hard ingredients such as ice cubes, cocoa beans, nutmeg, cocoa beans, etc.

BEFORE FIRST USE

- Wash the base stand and the beaker using warm water and neutral kitchen detergent. Then rinse them with clean water and allow them to dry naturally or dry them out their using a wiping cloth.
- Clean the other parts with only a dampened cloth. At the same time, ensure that water does not enter into these parts, especially into the motor unit speed control buttons. Do not submerge any of these parts

in water, do not clean them under running water or place them in a dishwasher.



Warning:

When cleaning the blade assemblies of the stick blender and the chopper, be very careful not to injure yourself on their sharp edges.

- Only clean the power cord and adapter using a dry wiping cloth, never wash with water.

CHARGING THE BATTERY

- To ensure the best possible performance, we recommend to fully charge the appliance before first use. A complete charge takes up to 5 hours.
- Insert the smaller end of the power cord into the USB socket in the top part of the motor unit and the larger end into the supplied power adapter. Then insert the power adapter into a power socket.



Note:

The appliance can be charged even when located in the base stand.

- During the charging process, indicators on the motor unit may flash or be lit depending on the charge status. The meaning of the light signals is the following:

Indicator (fig. B)	Battery capacity
All indicators are flashing	Low
Indicator B5 is lit, and indicators B4 and B3 are flashing	Medium
All indicators are lit	The battery is fully charged

- After a complete charge, the battery enables up 8-10 work cycles. The actual number of cycles, however, will differ depending on the load placed on the blender, operating mode and the ingredients that are processed. For example, with frequent use of high speed, the battery will discharge faster.

RECOMMENDATIONS FOR EXTENDING THE LIFETIME OF THE BATTERY

- In order for the battery to serve you as long as possible, charge, use and store the appliance in a dry environment at an ambient temperature of 15-35 °C. Lower or higher temperatures have a negative impact on the lifespan of the battery.
- When the appliance is not used for an extended period of time, charge it at least once every 6 months.

ASSEMBLY



Attention:

Before attaching/removing attachments or assembling/disassembling the chopper, the motor unit must be turned off and disconnected from the power cord.

When handling the blade assembly or the chopper, be very careful not to injure yourself on the sharp cutting edges.

BEATING OR WHISKING ATTACHMENTS

- Depending on the type of activity, select an attachment and place it against the motor unit from below. Align the locking tabs on the

attachment with the grooves on the motor unit and turn the motor unit in the clockwise direction until it is securely seated in place.

- To release the attachment from the motor unit, firmly grasp both parts and turn the motor unit anticlockwise until the tabs are released from the grooves. Then pull the attachment out of the motor unit.

CHOPPER AND BEAKER

- Place the blending beaker on an even and stable surface. Put the chopper on to the central pin located on the bottom of the beaker.
- Put the lid on to the beaker so that the shaft of the chopper slides into the central part of the lid and turn the lid clockwise until it is firmly secured in place.
- Mount the motor unit on to the lid following the same procedure as when mounting the attachments.
- To remove them proceed in the reverse sequence to their assembly.

OPERATION



Attention:

Always keep fingers, hair, clothing, etc. at a safe distance from the moving blade assembly of the blender and the chopper blades. Do not use the blending attachment to process very hard ingredients such as coffee beans, ice, bone-in meat or frozen foods, etc. Processing these foods may damage the appliance. Do not blend hot ingredients. Splattering hot liquids and ingredients may cause serious scalding. For reasons of increased safety, allow hot ingredients to cool down to at least 45 °C before blending them.



Note:

You may detect a slight odour when the appliance is used for the first time. That is normal and this odour will go away with further use.

CONTROLS

- To start the appliance, first press the safety button on the top part of the motor unit. Indicators **B3** to **B5** will start flashing, which means that the appliance is unlocked and ready for use.
- Press and hold down the low (I) or high (II) speed button. Releasing the button will stop the turning of the appliance.



Note:

If you do not press any speed button within a certain time, the indicators will turn off and the buttons will be locked. The appliance is thus secured against being accidentally started.

- If you wish to prevent ingredients from being excessively pulverised or to prevent ingredients from spraying out of the beaker when blending at high speed, we recommend using so-called pulse switching. Press and hold down button (II) for approx. 5 seconds and then release it. Wait a few moments and then repeat the procedure. However, do not use these pulse intervals for longer than 1 minute.



Note:

If you have been using the pulse intervals for 1 minute then leave the appliance idle for 5 minutes to allow it to cool down.

BLENDING AND WHISKING

- Select the attachment that you wish to use, and mount it according to the instructions in the chapter ASSEMBLY.
- Place the ingredients into the included beaker or another larger kitchen container. Do not overfill the beaker past the maximum level mark. In the event that there is no maximum level mark, fill it up to a maximum of 2/3 of its capacity. This will prevent splattering the ingredients while they are processed.
- Use one hand to hold the appliance by the top part of the motor unit and submerge the attachment into the prepared ingredients. Use the other hand to hold the container with the ingredients.

- Select the speed by pressing the respective button and move the blender slowly up and down in circular motions so that the ingredients are blended.
- As soon as the ingredients are processed, release the speed button and wait for the blade assembly or beaters/whisks to come to a stop. Only then remove the attachment from the container.



Attention:

The maximum continuous operating time of the appliance is 1 minute. Then allow it to cool down for approximately 10 minutes. When using the appliance to blend sticky or harder foodstuffs, interrupt operation already after 30 seconds.

CHOPPER

- When assembling the chopper, first place the chopper on to the central pin on the bottom of the beaker and only then insert the ingredients. Do not fill the beaker past the maximum level mark.
- Mount the lid and motor unit on to the beaker as described in chapter ASSEMBLY.
- Use one hand to hold the appliance by the top part of the motor unit and the other to hold the beaker.
- Start the chopper by pressing the button and process the ingredients.
- As soon as the ingredients are processed, release the speed button and wait for the chopper to come to a stop. Only then remove the lid with the motor unit from the beaker.

AUTOMATIC ANTI-OVERLOADING FUNCTION

- The appliance has an automatic anti-overloading function. In the event that the motor unit is overloaded, e.g. due to the ingredients being too tough or hard, indicators **B3** to **B5** will simultaneously flash five times and then the unit will turn itself off. If this happens, allow the appliance to rest for at least 10 minutes and adjust the amount and/or size of the ingredients. Only then continue using the appliance.

BATTERY CAPACITY INDICATOR

- The battery will start discharging when the appliance is used. Its capacity is shown using indicators **B3** to **B5** as follows:

Indicator	Battery capacity
All indicators are lit	High
Indicators B4 to B5 are lit	Medium
Indicator B5 is lit	Low
Indicator B5 is flashing	The battery is almost flat

ADVICE AND TIPS

- Before blending or chopping, remove hard parts such as fruit stones or bones from the blended ingredients. This will prevent damaging the blade assembly.
- To make blending and chopping easier, cut hard ingredients into small pieces.
- When using the blender attachment, it is recommended to always start blending at speed level (I). While blending, move the blender up and down to blend the ingredients to the required consistency.
- To prevent ingredients from splattering, put the blender attachment or the whisk into the beaker containing the ingredients before starting it, and conversely turn it off before pulling the attachment out of the beaker.
- To prevent ingredients from splattering, keep the blade assembly of the blending attachment and whisk submerged while the appliance is running. It is recommended to divide a larger amount of processed ingredients into several batches and to regularly inspect the contents inside the beaker.
- When using the blender or chopper attachment, it is recommended to process ingredients using pulse switching with speed (II). This will prevent the ingredients from being excessively pulverised and optimal results will be achieved.
- To achieve better blending results, hold the stick blender slightly tilted, while carefully moving it up and down in the beaker. Do not use force to push ingredients down with the stick blender.

QUICK GUIDE TO PROCESSING INGREDIENTS

- The food processing times provided below are only a reference. The actual processing time depends on the size of the ingredients, their amount and the required final consistency. If the required consistency is not achieved during the maximum operating time of the appliance, you may continue processing the food after the appliance has cooled down.

BLENDING

INGREDIENTS	AMOUNT	SPEED SETTING	PROCESSING TIME
Baby food	300 g	(I) to (II)	45 s
Spreads	200 g	(I) to (II)	30 s
Fruit and vegetables (cooked)	200 g	(I) to (II)	45 s
Sauces	500 ml	(I) to (II)	45 s
Shakes	500 ml	(I) to (II)	30 s

WHISKING

INGREDIENTS	AMOUNT	SPEED SETTING	PROCESSING TIME
Egg whites	4 pcs	(II)	60 s
Whipping cream	200 ml	(II)	60 s
Light doughs	500 g	(I) to (II)	60 s

CHOPPER

INGREDIENTS	AMOUNT	SPEED SETTING	PROCESSING TIME
Meat	300 g	(I) to (II)	30 s
Fruit and vegetables	200 g	(I) to (II)	15 s
Hard and semi-hard cheeses	150 g	(II)	10 s
Hard baked goods	100 g	(I) to (II)	20 s
Nuts with shells removed	100 g	(II)	15 s
Herbs	50 g	(I) to (II)	10 s

CLEANING AND MAINTENANCE



Warning:

When cleaning the blade assemblies of the stick blender and the chopper, be very careful not to injure yourself on their sharp edges. Do not use solvents, abrasive cleaning products, etc. for cleaning the appliance. Otherwise the surface coat of the appliance may be damaged.

- Before cleaning, the appliance must be turned off and disconnected from the power cord.
- Disassemble the appliance into its individual parts. Thoroughly wash the blade assembly, whisk or chopper and beaker in warm water and neutral kitchen detergent. Then rinse them with clean water and allow them to dry naturally or dry them out thoroughly using a wiping cloth.



Attention:

When washing attachments, ensure that water does not enter into the top parts by means of which they are mounted on to the motor unit. These parts contain a gear system that could be damaged by water. Do not submerge any of the attachments or the lid entirely in water, do not clean them under running water or place them in a dishwasher.

- When you have finished using the stick blender, it is possible to clean the blade assembly by submerging it in warm water with kitchen detergent, and running it for a short time. Then remove the attachment and rinse the blade assembly with clean drinking water and dry it thoroughly.
- Wipe the motor unit with a dry or slightly dampened cloth. Make sure that water does not enter into speed control buttons.
- Only clean the power cord and adapter using a dry wiping cloth, never wash with water liquids or other liquids.
- Never dry parts of the appliance over heat sources such as wood stoves, electric or gas stoves, etc.

STORAGE

- When you have finished using the appliance and have cleaned it, place it and its accessories in a clean, dry place out of children's reach. Keep the stored appliance and its accessories away from extreme temperatures, direct sunlight and excessive humidity and do not store it in an overly dusty environment.

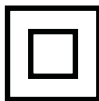
TECHNICAL SPECIFICATIONS

Power Adapter:
 Input.....100-240V ~ 50/60Hz, 0.5A Max
 Output.....5.0V === 2.0A, 10W

Unit:
 Battery.....11,1V Li-Ion, 2000mAh
 Rated Input.....5.0V === 2.0A
 Work Power.....200W
 Electrical shock protection class.....II
 Noise level.....90 dB(A)

The declared noise emission level of the appliance is 90 dB(A), which represents a level A of acoustic power with respect to a reference acoustic power of 1 - pW.

Explanation of technical terminology



Safety class for electrical shock protection:

Class II – Electrical shock protection is provided by double or heavy-duty insulation.

Changes to text and technical parameters are reserved.

INSTRUCTIONS AND INFORMATION REGARDING THE DISPOSAL OF USED PACKAGING MATERIALS

Dispose of used packaging material at a site designated for waste in your municipality.

DISPOSAL OF USED BATTERIES

Prior to handing over the appliance at a specialised collection facility, it is necessary to ensure that the built-in battery is removed. Battery removal will be performed at the authorised service centre. In the event that the product has been disassembled for the purpose of ecological disposal then it must not be reassembled.



This symbol indicates that the used battery does not belong in ordinary municipal waste. Hand over the used battery to designated collection points for proper disposal. Correct disposal of the battery will help prevent negative impacts on the environment and human health.

Disposal in other countries outside the European Union.

This symbol is valid in the European Union. If you wish to dispose of this product, request the necessary information about the correct disposal method from the local council or from your retailer.

INSTRUCTIONS AND INFORMATION REGARDING THE DISPOSAL OF USED PACKAGING MATERIALS

Dispose of used packaging material at a site designated for waste in your municipality.

DISPOSAL OF USED ELECTRICAL AND ELECTRONIC EQUIPMENT



This symbol on products or original documents means that used electric or electronic products must not be added to ordinary municipal waste. For proper disposal, renewal and recycling, hand over these products to determined collection points. Alternatively, in some European Union states or other European countries you may return your

appliances to the local retailer when buying an equivalent new appliance. Correct disposal of this product helps save

valuable natural resources and prevents potential negative effects on the environment and human health, which could result from improper waste disposal. Ask your local authorities or collection facility for more details. In accordance with national regulations penalties may be imposed for the incorrect disposal of this type of waste.

For business entities in European Union states

If you want to dispose of electrical or electronic equipment, ask your retailer or supplier for the necessary information.

Disposal in other countries outside the European Union.

This symbol is valid in the European Union. If you wish to dispose of this product, request the necessary information about the correct disposal method from the local council or from your retailer.



This product meets all the basic requirements of EU directives related to it.

