

Samsung Portable SSD macOS Compatibility Troubleshooting Guide

Revision 1.0

DISCLAIMER

SAMSUNG ELECTRONICS RESERVES THE RIGHT TO CHANGE PRODUCTS, INFORMATION AND SPECIFICATIONS WITHOUT NOTICE.

Products and specifications discussed herein are for reference purposes only. All information discussed herein may change without notice and is provided on an “AS IS” basis, without warranties of any kind. This document and all information discussed herein remain the sole and exclusive property of Samsung Electronics. No license of any patent, copyright, mask work, trademark or any other intellectual property right is granted by one party to the other party under this document, by implication, estoppels or otherwise. Samsung products are not intended for use in life support, critical care, medical, safety equipment, or similar applications where product failure could result in loss of life or personal or physical harm, or any military or defense application, or any governmental procurement to which special terms or provisions may apply. For updates or additional information about Samsung products, contact your nearest Samsung office (www.samsung.com/ssd and www.samsung.com/support). All brand names, trademarks and registered trademarks belong to their respective owners.

COPYRIGHT © 2020

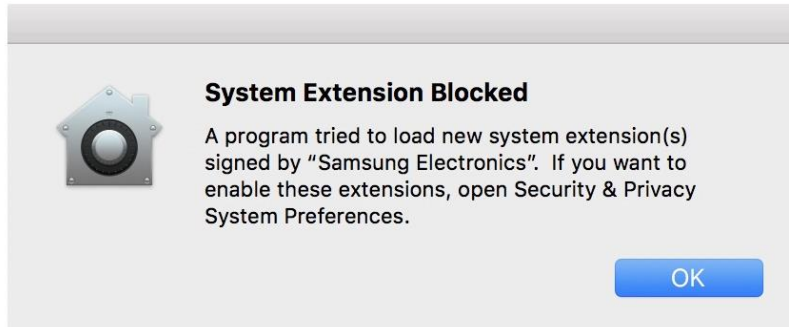
This material is copyrighted by Samsung Electronics. Any unauthorized reproductions, use or disclosure of this material, or any part thereof, is strictly prohibited and is a violation under copyright law.

Background

macOS security policies are continuously updated, so some users may encounter software that is not distributed by Apple incompatible with macOS. Portable SSD Software included in Samsung Portable SSDs may run into such incompatibility issue.

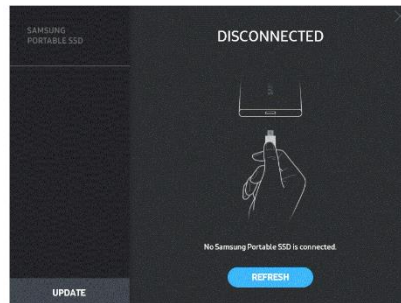
[Examples]

A "System Extension Blocked" message appears when installing Samsung Portable SSD Software



Example of error message

"No Samsung Portable SSD is connected." message appears even though the Samsung Portable SSD Software has been installed on the device running macOS



Example of error message

Troubleshooting Guide

The issues vary depending on the macOS version. If you encounter a problem when running the Samsung Portable SSD software on macOS, please follow the steps below:

1. Check which version of macOS your system is running and whether you have the latest version¹ of the Portable SSD Software (version 1.6.6 or higher).

The latest version of the Portable SSD Software can be found at

<http://www.samsung.com/semiconductor/minisite/ssd/download/tools/>.

Please note that the software for the T7 Touch and T7 is different from the software for previous generations of portable SSD (T5, X5, and lower).

PORTABLE SSD SOFTWARE

Portable SSD Software Compatibility Troubleshooting Guide for MacOS	+
Samsung Portable SSD Software for T7 Touch(3)	+
Samsung Portable SSD Software for T5, X5(3)	+

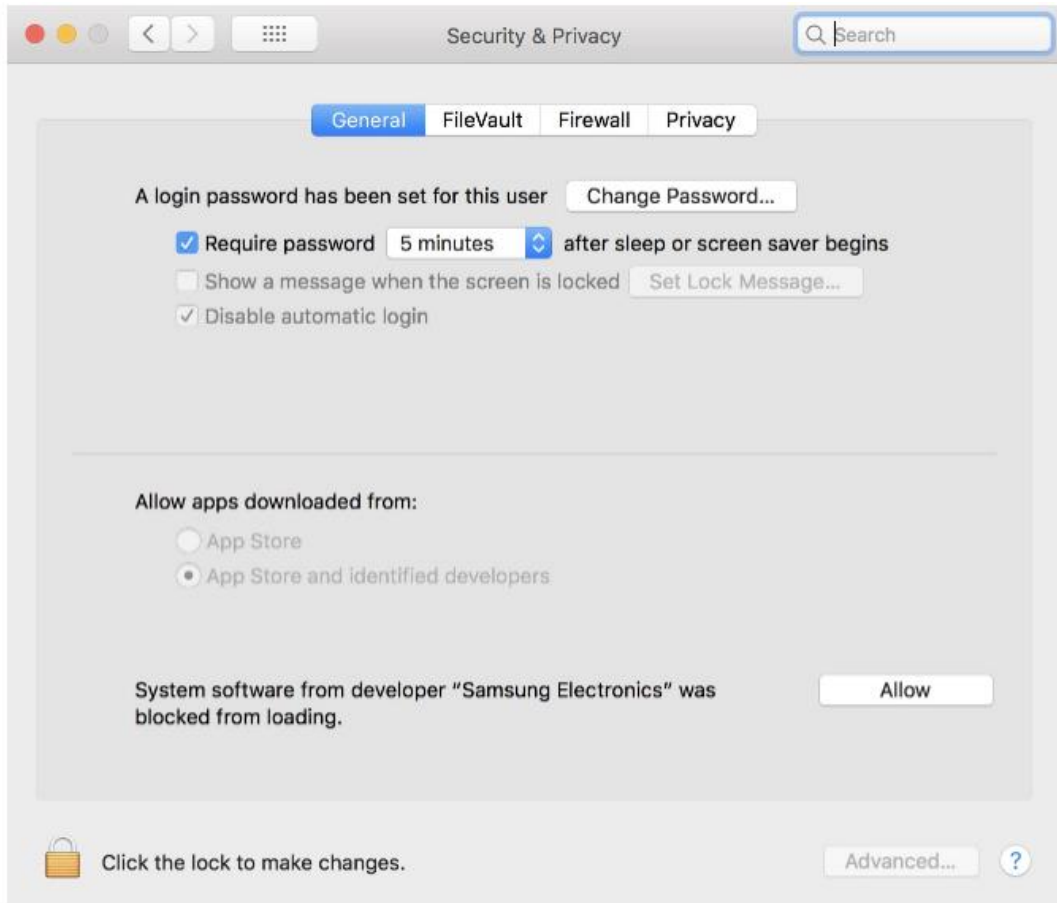
Software available on the SSD mini-site

2. Change software settings in your system running macOS in order to use the software.

Open "Security & Privacy" in the "System Preferences" menu.

Click the "Allow" button next to the message, "System software from developer "Samsung Electronics" was blocked from loading".

¹ Please refer to the following link for more details on how to find out your macOS version - <https://support.apple.com/en-us/HT201260>



Security & Privacy settings

Re-connect your Portable SSD to the device running macOS system and execute the Samsung Portable SSD Software.

3. If the problem continues, delete and re-install the Samsung Portable SSD Software.

4. If the problem does not get resolved even after following the troubleshooting guidelines, please contact an authorized Samsung service center.