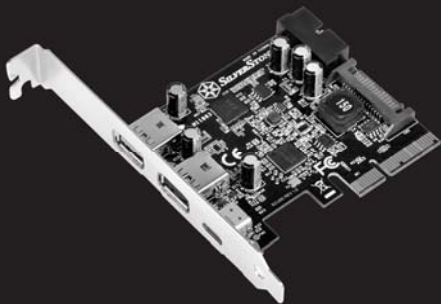




**SILVERSTONE**<sup>®</sup>  
Designing Inspiration

## Expansion Cards **ECU05**



USB 3.1 Type-C + USB 3.0 Type-A PCI Express card  
with internal 19pin USB 3.0

## **Installation and system optimization guide:**

The following manual and guides were carefully prepared by the SilverStone engineering team to help you maximize the potential of your SilverStone product. Please keep this manual for future reference when upgrading or performing maintenance on your system. A copy of this manual can also be downloaded from our website at:

<http://www.silverstonetek.com>

- Product Overview ----- P.1
- Installation Guide ----- P.2
- Attention ----- P.6
- Warranty Information ----- P.8

## Introduction

The SilverStone ECU05 is a PCI-E 2.0 x2 expansion card with reversible USB 3.1 Type-C and USB 3.0 ports. Its single USB 3.1 Type-C port is capable of fully utilizing PCI-E 2.0 x2 slot for up to 10Gbps bandwidth, which is twice the USB 3.0 performance for offering excellent stability when multiple external USB devices are in use simultaneously. ECU05 also has additional two external USB 3.0 Type-A ports and an internal 19pin USB 3.0 connector to provide your system with five total added USB ports. For fast charging, one of the Type-A ports (black) meets USB Battery Charging (BC) 1.2 standard to deliver quick and safe charging to your mobile devices. Finally, the ECU05 supports UASP (USB Attached SCSI Protocol) for enhanced performance, so operating systems with XHCI (eXtensible Host Controller Interface) can easily detect and install ECU05 without the need for any drivers.



## Features

- Includes SuperSpeed USB 3.1 external USB Type-C connector
- Includes USB 3.0 internal 19pin connector and two external USB Type-A connectors
- Dedicated fast charging port, compliant with USB Battery Charging (BC) 1.2
- Support PCI-E 2.0 x2 with throughput up to 10Gbps
- Compliant with eXtensible Host Controller Interface (XHCI) specification Revision 1.1
- Compliant with USB Attached SCSI Protocol (UASP) Revision 1.0
- Includes optional low profile slot cover for supporting low profile cases

## Specifications

Model No.	SST-ECU05
Power requirement	5V via SATA 15-pin power connector
Form factor	Low profile - PCI-E 2.0 x2 (10Gbps)
USB 3.1 controller	ASMedia ASM1142
USB 3.0 hub controller	VIA Lab VL812
USB ports	USB 3.1 Type-C x 1, DFP with Rp=10KΩ and up to 5V 3A USB 3.0 Type-A x 1 USB 3.0 Type-A with dedicated charging port x 1, up to 5V 2A Internal 19pin connector x 1, for up to two USB 3.0 ports
Transmitting speed	USB 3.1 Gen 2.0 (10Gbps), USB 3.1 Gen 1.0 / USB 3.0 (5Gbps), USB 2.0 (480Mbps), USB 1.1 (12Mbps)
Operating system support	Windows 7 (32bit/64bit)*, 8/8.1/10 (32bit/64bit)**, Ubuntu/Linux/Mac OS***
Power management	Support USB 3.1 / USB 3.0 and USB 2.0 link power management
Current protection	Support over current detection and protection

\* If your OS version is Windows 7 or earlier, please install driver (available from SilverStone website) prior to using the ECU05.

\*\* Windows 8 or 8.1, 10 supports ECU05 automatically so you do not need to install additional driver for it.

\*\*\* User should check for XHCI function in Ubuntu/Linux or Mac OS, if computer system supports XHCI function then it can support ECU05 automatically without additional driver installation.

# Installation Guide

01

## ENGLISH

Install ECU05 into PCI-E slot on the motherboard.

## DEUTSCH

Installieren Sie die ECU05 im PCI-E-Steckplatz am Motherboard.

## FRANÇAIS

Installez l'ECU05 dans l'emplacement PCI-E de la carte mère.

## ESPAÑOL

Instale el ECU05 en el zócalo PCI-E de la placa base.

## ITALIANO

Installare ECU05 nell'alloggio PCI-E sulla scheda madre.

## РУССКИЙ

Установите карту ECU05 в слот PCI-E на системной плате.

## 繁體中文

將ECU05 安裝於主機板上的PCI-E插槽。

## 簡體中文

將ECU05 安裝于主板上的PCI-E插槽。

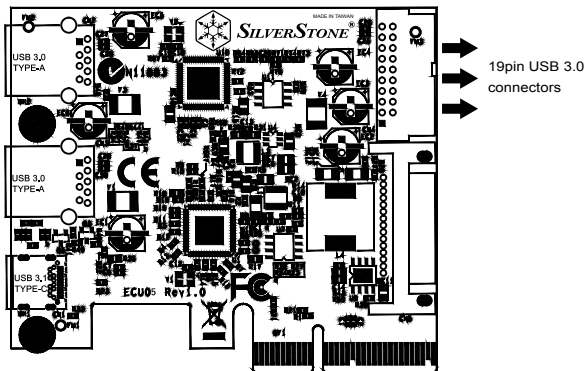
## 日本語

マザーボードのPCI-EスロットにECU05をインストールします。

## 한국어

메인보드의 PCI-E 슬롯에 ECU05를 설치합니다.

02

**ENGLISH**

Connect to internal 19pin USB 3.0 connectors.

**РУССКИЙ**

Подключите встроенные 19-контактные разъемы USB 3.0.

**DEUTSCH**

Mit internen 19-poligen USB 3.0-Anschlüssen verbinden.

**繁體中文**

連接內接19pin USB 3.0線材。

**FRANÇAIS**

Connexion aux connecteurs internes USB 3.0 à 19 broches.

**簡体中文**

連接內接19pin USB 3.0線材。

**ESPAÑOL**

Enchufe los conectores internos USB 3.0 de 19 pines.

**日本語**

内部19ピンUSB 3.0コネクタに接続します。

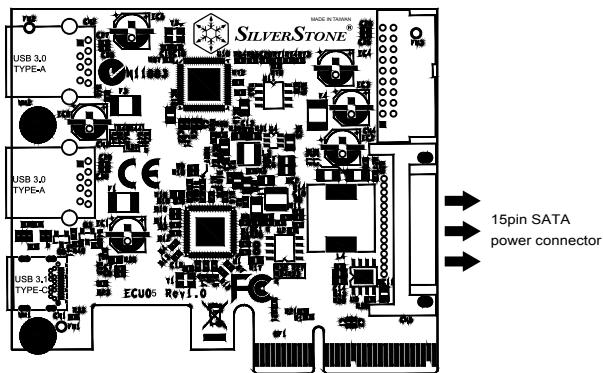
**ITALIANO**

Enchufe los conectores internos USB 3.0 de 19 pines.

**한국어**

내장형 19핀 USB 3.0 커넥터에 연결합니다.

03

**ENGLISH**

Connect to 15pin SATA power connector.

**РУССКИЙ**

Подключите 15-контактный разъем питания SATA.

**DEUTSCH**

Mit einem 15-poligen SATA-Stromanschluss verbinden.

**繁體中文**

將15pin SATA電源線接上。

**FRANÇAIS**

Connexion au connecteur d'alimentation SATA à 15 broches.

**簡體中文**

將15pin SATA電源線接上。

**ESPAÑOL**

Enchufe el conector de potencia SATA de 15 pines.

**日本語**

15ピンSATA電源コネクタに接続します。

**ITALIANO**

Collegare al connettore di alimentazione SATA a 15 pin.

**한국어**

15핀 SATA 전원 커넥터에 연결합니다.

04

**ENGLISH**

Plug in your USB 3.1/3.0 devices and enjoy USB 3.1/3.0 super speed rate.

**DEUTSCH**

Schließen Sie Ihr USB 3.1/3.0-Gerät an und genießen die USB 3.1/3.0-Super-Speed-Übertragungsgeschwindigkeit von.

**FRANÇAIS**

Branchez votre périphérique USB 3.1/3.0 et bénéficiez du taux de transfert de l'USB 3.1/3.0 SuperSpeed.

**ESPAÑOL**

Conecte su dispositivo USB 3.1/3.0 y disfrute de la súper velocidad de transferencia de USB 3.1/3.0.

**ITALIANO**

Collegare il dispositivo USB 3.1/3.0 per apprezzare la velocità di trasferimento Super Speed USB 3.1/3.0.

**РУССКИЙ**

Подключите устройство с интерфейсом USB 3.1/3.0 и передавайте данные со скоростью через разъем USB 3.1/3.0.

**繁體中文**

連接USB 3.1/3.0裝置並開始享受高速傳輸速度。

**簡體中文**

连接USB 3.1/3.0装置并开始享受高速传输速度。

**日本語**

USB 3.1/3.0 デバイスを接続して、USB 3.1/3.0の超高速転送速度を実感できます。

**한국어**

USB 3.1/3.0 장치를 연결하면 USB 3.1/3.0 초고속 전송 속도를 이용할 수 있습니다.

# Attention

**ENGLISH**

1. If your OS version is Windows 7 or earlier, please install driver (available from SilverStone website) prior to using the ECU05.
2. Windows 8 or 8.1, 10 supports ECU05 automatically so you do not need to install additional driver for it.
3. User should check for XHCI function in Ubuntu/Linux or Mac OS, if computer system supports XHCI function then it can support ECU05 automatically without additional driver installation.

**DEUTSCH**

1. Unter Windows 7 oder älteren Versionen installieren Sie bitte den ASM1142-Treiber zur Realisierung von USB 3.1-Super-Speed-Leistung.
2. Windows 8 oder 8.1, 10 unterstützen die ECU05 automatisch, wodurch Sie keinen zusätzlichen Treiber installieren müssen.
3. Nutzer sollten Ubuntu/Linux oder Mac OS auf XHCI-Funktion prüfen; falls das Computersystem XHCI unterstützt, kann die ECU05 automatisch ohne zusätzlichen Treiber genutzt werden.

**FRANÇAIS**

1. Sur Windows 7 ou les versions précédentes, veuillez installer le pilote ASM1142 pour bénéficier des performances de l'USB 3.1 SuperSpeed.
2. Windows 8 et 8.1, 10 prennent en charge automatiquement l'ECU05, vous ne devez donc pas installer de pilote supplémentaire dédié.
3. L'utilisateur doit vérifier la présence de la fonction XHCI dans Ubuntu/Linux ou Mac OS ; si le système informatique prend en charge la fonction XHCI il peut prendre en charge automatiquement l'ECU05 sans installation de pilote supplémentaire.

**ESPAÑOL**

1. En Windows 7 o versiones previas, por favor instale el controlador ASM1142 para activar el rendimiento de súper velocidad de USB 3.1
2. Windows 8 u 8.1, 10 acepta el ECU05 automáticamente, por lo que no necesita instalar controladores adicionales.
3. El usuario debería comprobar la función XHCI en Ubuntu/Linux o Mac OS, si el sistema acepta la función XHCI, entonces aceptará el ECU05 automáticamente sin necesidad de instalar controladores adicionales.

**ITALIANO**

1. Su Windows 7 o versione precedente, installare il driver ASM1142 per consentire le prestazioni USB 3.1 SuperSpeed.
2. Windows 8 o 8.1, 10 supporta automaticamente ECU05, quindi non è necessario installare alcun driver aggiuntivo.
3. È necessario verificare la funzione XHCI su Ubuntu/Linux o Mac OS; se il sistema del computer supporta la funzione XHCI allora può supportare automaticamente ECU05 senza installazione di driver aggiuntivi.



**РУССКИЙ**

1. В ОС Windows 7 или предыдущих версиях установите драйвер ASM1142 для включения функции SuperSpeed USB 3.1.
2. В ОС Windows 8 или 8.1, 10 карта ECU05 поддерживается автоматически, поэтому установка дополнительного драйвера не требуется.
3. Пользователь должен проверить наличие функции XHCI в ОС Ubuntu/Linux или Mac OS, если ОС компьютера поддерживает функцию XHCI, то карта ECU05 поддерживается автоматически без необходимости установки дополнительного драйвера.

**繁體中文**

1. 若您使用Windows 7 或舊版作業程式，請先安裝ASM1142驅動程式，然後再開始享受高速傳輸速度的ECU05。
2. ECU05已經支援Windows 8 或 8.1, 10, 所以當您使用ECU05時，不用安裝驅動程式就可使用。
3. 當您使用ECU05前，請確認您的Ubuntu/Linux 或 Mac作業系統是否支援XHCI功能，若已經支援XHCI功能，不用安裝驅動程式就可使用。

**簡體中文**

1. 若您使用Windows 7 或旧版作业程序，请先安装ASM1142驱动程序，然后再开始享受高速传输速度的ECU05。
2. ECU05已经支持Windows 8 或 8.1, 10所以当您使用ECU05时，不用安装驱动程序就可使用。
3. 当您使用ECU05前，请确认您的Ubuntu/Linux 或 Mac操作系统是否支持XHCI功能，若已经支持XHCI功能，不用安装驱动程序就可使用。

**日本語**

1. Windows 7または以前のバージョンでは、SuperSpeed USB 3.1機能を有効にするにはASM1142ドライバをインストールしてください。
2. Windows 8および8.1, 10では自動的にECU05に対応するので、ドライバを別途インストールする必要はありません。
3. Ubuntu/LinuxまたはMac OS においてXHCI機能への対応の有無はユーザーによる確認が必要です。コンピュータシステムがXHCI機能に対応している場合は、ドライバの別途インストールは不要で自動的にECU05に対応します。

**한국어**

1. Windows 7 이전 버전의 경우, SuperSpeed USB 3.1 성능을 사용하려면 ASM1142 드라이버를 설치하십시오.
2. Windows 8 또는 8.1, 10은 ECU05를 자동으로 지원하기 때문에 드라이버를 추가적으로 설치할 필요가 없습니다.
3. 사용자는 Ubuntu/Linux 또는 Mac OS에서 XHCI를 확인해야 하고, 컴퓨터 운영 체제가 XHCI 기능을 지원할 경우 드라이버의 추가 설치 없이 ECU05를 자동으로 지원할 수 있습니다.

# Warranty Information

This product has a limited 1 year warranty in North America and Australia.

For information on warranty periods in other regions, please contact your reseller or SilverStone authorized distributor.

## Warranty terms & conditions

- Product component defects or damages resulted from defective production is covered under warranty.  
Defects or damages with the following conditions will be fixed or replaced under SilverStone Technology's jurisdiction.
  - Usage in accordance with instructions provided in this manual, with no misuse, overuse, or other inappropriate actions.
  - Damage not caused by natural disaster (thunder, fire, earthquake, flood, salt, wind, insect, animals, etc...)
  - Product is not disassembled, modified, or fixed. Components not disassembled or replaced.
  - Warranty mark/stickers are not removed or broken.
 Loss or damages resulted from conditions other than ones listed above are not covered under warranty.
- Under warranty, SilverStone Technology's maximum liability is limited to the current market value for the product (depreciated value, excluding shipping, handling, and other fees). SilverStone Technology is not responsible for other damages or loss associated with the use of product.
- Under warranty, SilverStone Technology is obligated to repair or replace its defective products. Under no circumstances will SilverStone Technology be liable for damages in connection with the sale, purchase, or use including but not limited to loss of data, loss of business, loss of profits, loss of use of the product or incidental or consequential damage whether or not foreseeable and whether or not based on breach of warranty, contract or negligence, even if SilverStone Technology has been advised of the possibility of such damages.
- Warranty covers only the original purchaser through authorized SilverStone distributors and resellers and is not transferable to a second hand purchaser.
- You must provide sales receipt or invoice with clear indication of purchase date to determine warranty eligibility.
- If a problem develops during the warranty period, please contact your retailer/reseller/SilverStone authorized distributors or SilverStone <http://www.silverstonetek.com>.  
Please note that: (i) You must provide proof of original purchase of the product by a dated itemized receipt; (ii) You shall bear the cost of shipping (or otherwise transporting) the product to SilverStone authorized distributors. SilverStone authorized distributors will bear the cost of shipping (or otherwise transporting) the product back to you after completing the warranty service; (iii) Before you send the product, you must be issued a Return Merchandise Authorization ("RMA") number from SilverStone. Updated warranty information will be posted on SilverStone's official website. Please visit <http://www.silverstonetek.com> for the latest updates.

## Additional info & contacts

**For North America** ([usasupport@silverstonetek.com](mailto:usasupport@silverstonetek.com))

SilverStone Technology in North America may repair or replace defective product with refurbished product that is not new but has been functionally tested.

Replacement product will be warranted for remainder of the warranty period or thirty days, whichever is longer. All products should be sent back to the place of purchase if it is within 30 days of purchase, after 30 days, customers need to initiate RMA procedure with SilverStone Technology in USA by first downloading the "USA RMA form for end-users" form from the below link and follow its instructions.

<http://silverstonetek.com/contactus.php>

# Warranty Information

**For Australia only** ([support@silverstonetek.com](mailto:support@silverstonetek.com))

Our goods come with guarantees that cannot be excluded under the Australian Consumer Law.

You are entitled to a replacement or refund for a major failure and for compensation for any other reasonably foreseeable loss or damage.

You are also entitled to have the goods repaired or replaced if the goods fail to be of acceptable quality and the failure does not amount to a major failure.

Please refer to above "Warranty terms & conditions" for further warranty details.

SilverStone Technology Co., Ltd. 12F No. 168 Jiankang Rd., Zhonghe Dist.,

New Taipei City 235 Taiwan R.O.C. + 886-2-8228-1238

(standard international call charges apply)

**For Europe** ([support.eu@silverstonetek.de](mailto:support.eu@silverstonetek.de))

**For all other regions** ([support@silverstonetek.com](mailto:support@silverstonetek.com))

*SilverStone Technology Co., Ltd.*

---

**[www.silverstonetek.com](http://www.silverstonetek.com)**

---

[support@silverstonetek.com](mailto:support@silverstonetek.com)

NO: G11226100